



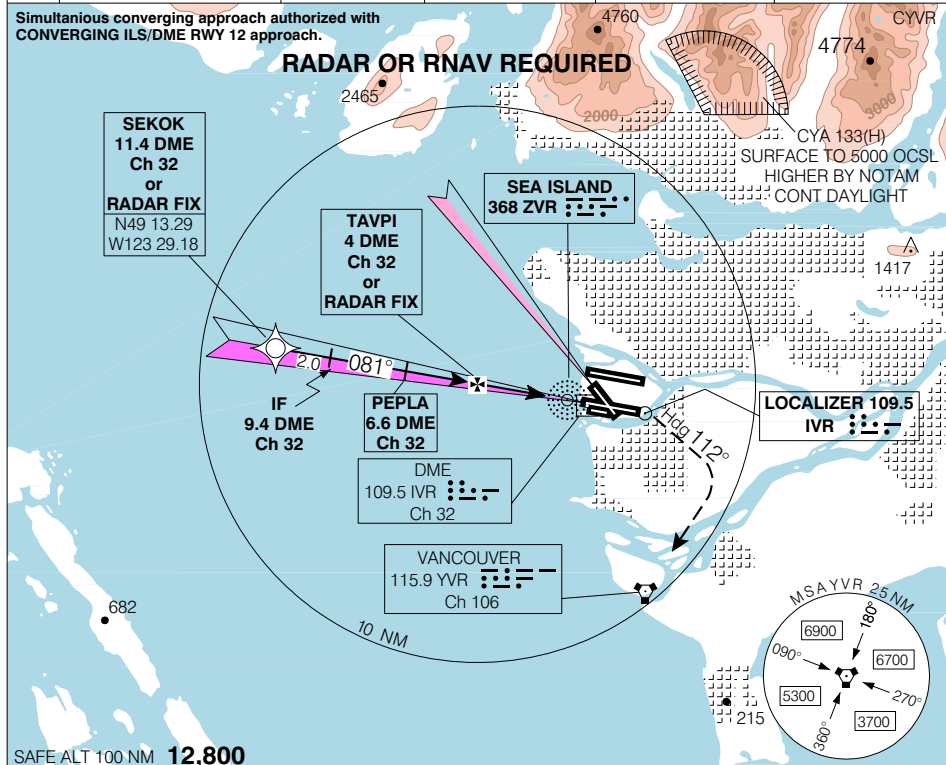
VANCOUVER INTL  
VANCOUVER BC

CONVERGING ILS/DME or ILS/RADAR RWY 08R

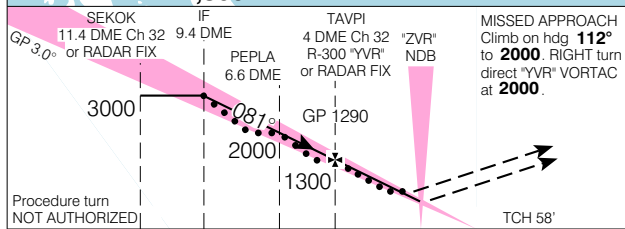
|                      |  |   |   |  |                                     |
|----------------------|--|---|---|--|-------------------------------------|
| <b>ATIS</b><br>124.6 | <b>ARR</b><br>128.6(Outer) 133.1(Inner)<br>352.7 | <b>TWR</b><br>124.0 118.7(S)<br>119.55(N) 226.5 | <b>GND</b><br>121.7(S) 127.15(N)<br>275.8 | <b>DEP</b><br>126.125(N) 132.3(S)<br>363.8 | <b>ELEV 14</b><br><b>TDZE 08R 9</b> |
|----------------------|--|---|---|--|-------------------------------------|

Simultaneous converging approach authorized with CONVERGING ILS/DME RWY 12 approach.

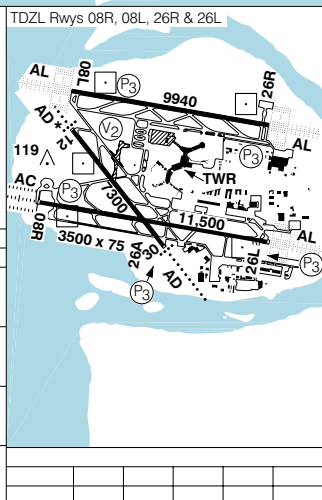
**RADAR OR RNAV REQUIRED**



SAFE ALT 100 NM **12,800**



|                               |                                   |                  |                     |  |          |  |
|-------------------------------|-----------------------------------|------------------|---------------------|--|----------|--|
| GP 3.0°                       | SEKOK 11.4 DME Ch 32 or RADAR FIX | IF 9.4 DME Ch 32 | PEPLA 6.6 DME Ch 32 | TAVPI 4 DME Ch 32 R-300 *YVR* or RADAR FIX | ZVR* NDB | MISSED APPROACH<br>Climb on hdg <b>112°</b> to <b>2000</b> RIGHT turn direct *YVR* VORTAC at <b>2000</b> . |
| Procedure turn NOT AUTHORIZED |                                   |                  |                     |  |          |  |
| CATEGORY                      | A                                 | B                | C                   | D  |          |  |
| CONVERGING ILS/DME ILS/RADAR  | <b>209</b>                        | (200)            | ½ RVR 26            |  |          |  |
| LOC/DME LOC/RADAR             | <b>300</b>                        | (291)            | 1 RVR 50            |  |          |  |
| CIRCLING                      | NOT AUTHORIZED                    |                  |                     |  |          |  |



CONVERGING ILS/DME or ILS/RADAR RWY 08R VAR 19° E VANCOUVER BC  
EFF 22 DEC 05 CHANGE: Editorial N49 11 38 W123 11 04 VANCOUVER INTL  
NAD83