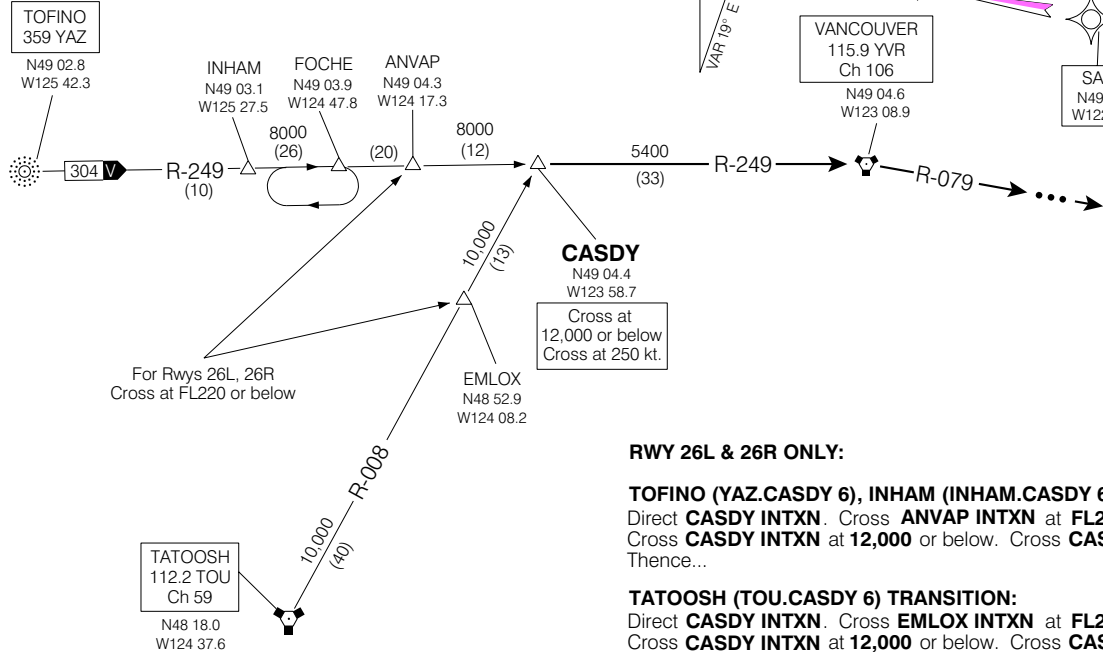


**MAINTAIN ASSIGNED ALTITUDE  
UNTIL CLEARED FOR APPROACH**

... → **MAINTAIN PRESENT  
HEADING FOR VECTORS  
TO FINAL APPROACH.**

**ATIS 124.6**  
**ARR 128.6(Outer) 133.1(Inner)**  
**352.7**  
**TWR 119.55(N) 118.7(S)**  
**226.5**



**RWY 26L & 26R ONLY:**

**TOFINO (YAZ.CASDY 6), INHAM (INHAM.CASDY 6) TRANSITION:**

Direct **CASDY INTXN**. Cross **ANVAP INTXN** at **FL220** or below.  
Cross **CASDY INTXN** at **12,000** or below. Cross **CASDY INTXN** at **250 kt**.  
Thence...

**TATOOSH (TOU.CASDY 6) TRANSITION:**

Direct **CASDY INTXN**. Cross **EMLOX INTXN** at **FL220** or below.  
Cross **CASDY INTXN** at **12,000** or below. Cross **CASDY INTXN** at **250 kt**.  
Thence...

Proceed to **YVR VORTAC** via **R-249** then via **R-079**. Expect **RADAR VECTORS** to final approach course. Do **NOT** expect lower than **8,000** until **East** of **YVR VORTAC**.

FROM: **CASDY**  
APRX DIST TO: **RWYS 26L & 26R - 62 NM**

Chart not to scale