

STAR (RNAV) RWYS 26L & 26R  
**CANUCK SIX ARR** (BOOTH:CANUC 6)

VANCOUVER INTL  
VANCOUVER BC

**ATIS 124.6**  
**ARR 128.6(Outer) 133.1(Inner)**  
**352.7**  
**TWR 119.55(N) 118.7(S)**  
**226.5**

**ALL ALTITUDES WILL BE ISSUED BY ATC**

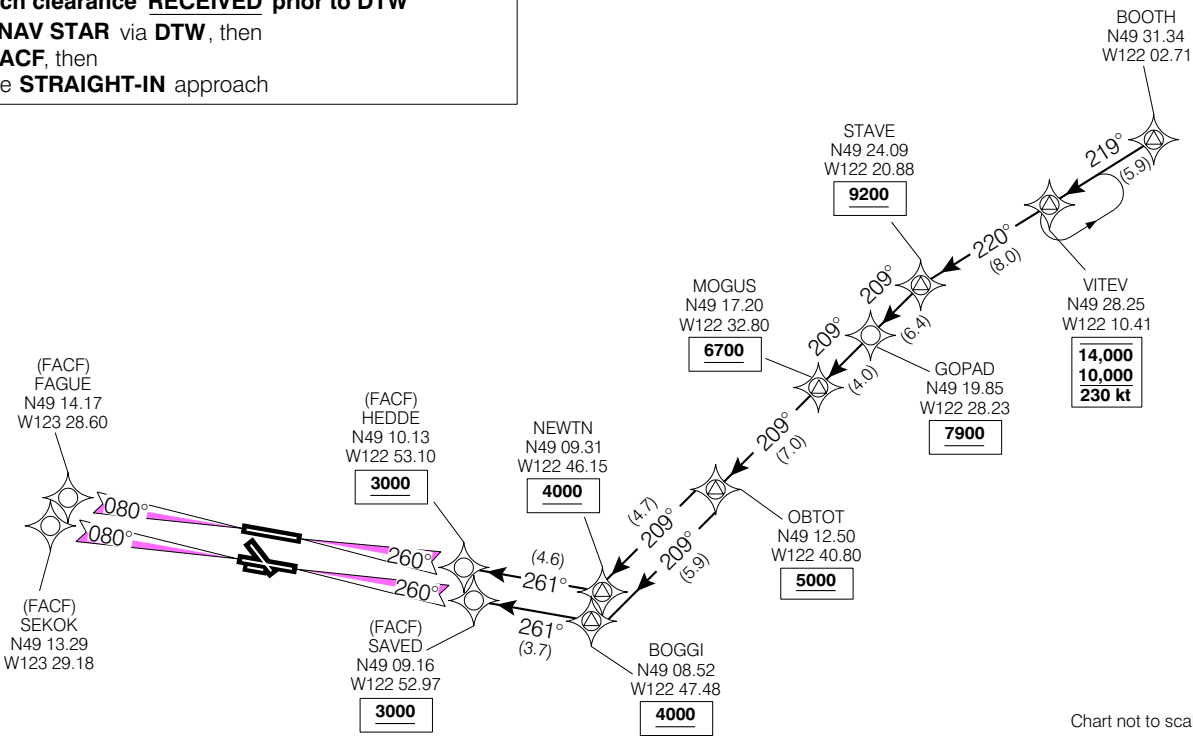
If RNAV STAR includes a DTW, the following procedures apply.

If approach clearance is **NOT RECEIVED** prior to DTW

- Fly depicted heading ••• →
- Expect radar vectors to final

If approach clearance **RECEIVED** prior to DTW

- Fly **RNAV STAR** via **DTW**, then
- Via **FACF**, then
- Fly the **STRAIGHT-IN** approach



© 2006 Her Majesty The Queen in Right of Canada, Department of Natural Resources All rights reserved. Source of Canadian Civil Aeronautical Data: © 2006 NAV CANADA All rights reserved.

**CANUCK SIX ARR** (BOOTH:CANUC 6)

VAR 19° E (2003)

VANCOUVER BC  
VANCOUVER INTL  
NAD83

EFF 13 APR 06

CHANGE: OBTO1