

STAR

**BOOTH SIX ARR** (BOOTH, BOOTH 6)

VANCOUVER INTL  
VANCOUVER BC

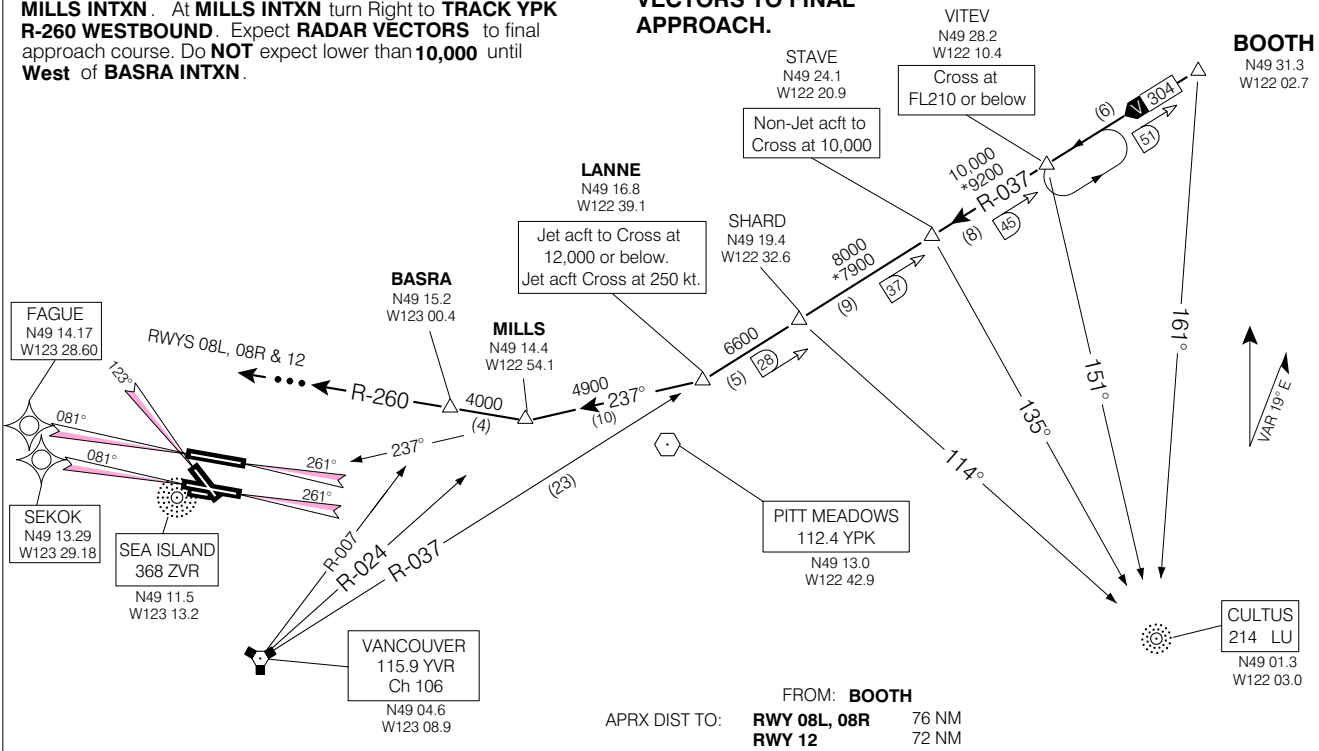
**ATIS 124.6**  
**ARR 128.6(Outer) 133.1(Inner)**  
**352.7**  
**TWR 119.55(N) 118.7(S)**  
**226.5**

**MAINTAIN ASSIGNED  
ALTITUDE UNTIL  
CLEARED FOR APPROACH**

**... ➔ EXPECT RADAR  
VECTORS TO FINAL  
APPROACH.**

**RWYS 08L, 08R & 12 ONLY**

....From **BOOTH INTXN** via **YVR R-037** to **LANNE INTXN**.  
Cross **VITEV INTXN** at **FL210** or below. Non-Jet acft to Cross **STAVE INTXN** at **10,000**. Jet acft to Cross **LANNE INTXN** at **12,000** or below. Jet acft Cross **LANNE INTXN** at **250 kt**. At **LANNE INTXN** **TRACK 237°** towards **SEA ISLAND NDB** to **MILLS INTXN**. At **MILLS INTXN** turn Right to **TRACK YPK R-260 WESTBOUND**. Expect **RADAR VECTORS** to final approach course. Do **NOT** expect lower than **10,000** until **West** of **BASRA INTXN**.



FROM: **BOOTH**  
APRX DIST TO: **RWY 08L, 08R** 76 NM  
**RWY 12** 72 NM

Chart not to scale

**BOOTH SIX ARR** (BOOTH, BOOTH 6)

VANCOUVER BC  
VANCOUVER INTL  
NAD83

EFF 13 APR 06 CHANGE: Revised