

STAR  
PLATTSBURGH SIX ARR (PLB, PLB 6)

MONTREAL/PIERRE ELLIOTT TRUDEAU INTL  
Geomatics Canada  
MONTREAL, QC

**ALL RWYS**

**ISSUANCE OF AN ARRIVAL CLEARANCE REQUIRES THE PILOT TO FLY THE PUBLISHED ARRIVAL FLIGHT PATH AND MAINTAIN THE LAST ASSIGNED ALTITUDE.**

**RWYS 06L & 06R**

.... From **PLB** via **R-003** to **NAPEE** then **Hdg 325°** or direct to **GADUM**. Then continue on **Hdg 325°** unless cleared for an approach. Cross **NAPEE** at 8000' or below.

**RWY 10**

.... From **PLB** via **R-003** to **NAPEE** then **Hdg 324°** or direct **COMAU**. Then continue on **Hdg 283°** unless cleared for an approach. Cross **NAPEE** at 8000' or below.

**RWYS 24L & 24R**

.... From **PLB** via **R-003** to **NAPEE** then **Hdg 033°** or direct **TIDAM**. Then continue on **Hdg 058°** unless cleared for an approach. Cross **NAPEE** at 14,000' or below.

**RWY 28**

.... From **PLB** via **R-003** to **NAPEE** then **Hdg 044°** or direct **EBGUR**. Then continue on **Hdg 044°** unless cleared for an approach. Cross **NAPEE** at 8000' or below.

GADUM	YJN R-289 / 21.7 DME	N45 16.25 / W073 49.98
COMAU	MSS R-061 / 41 DME	N45 22.55 / W074 01.03
TIDAM	YJN R-352 / 18.7 DME	N45 32.42 / W073 29.97
EBGUR	YJN R-337 / 11.4 DME	N45 24.22 / W073 29.52
NAPEE	YJN R-268 / 15.6 DME	N45 10.38 / W073 40.17
ABCOT	YJN R-242 / 18.3 DME	N45 02.61 / W073 37.82

**COMMUNICATION FAILURE**

1. Select mode C/3 code 7600
2. 3 minutes after selecting 7600, and not before "PLB" VORTAC descend to MEA following the STAR routing to the IAF or IF, as applicable. If necessary shuttle descend at NAPEE INTXN.
3. At IF, execute a straight-in approach for landing.

<b>MONTREAL ATIS</b>	<b>133.7 (Eng)</b>	<b>127.5 (Fr)</b>
<b>MONTREAL ARR</b>	<b>118.9</b>	<b>124.65</b>
	<b>126.9</b>	<b>132.85</b>
	<b>268.3</b>	
<b>MONTREAL TWR</b>	<b>119.9</b>	<b>267.1</b>
<b>MONTREAL GND</b>	<b>121.9</b>	<b>275.8</b>

FROM:	PLB	NAPEE
APRX DIST TO:		
<b>RWYS 06</b>	56 NM	26 NM
<b>RWY 10</b>	66 NM	36 NM
<b>RWYS 24</b>	69 NM	39 NM
<b>RWY 28</b>	62 NM	32 NM

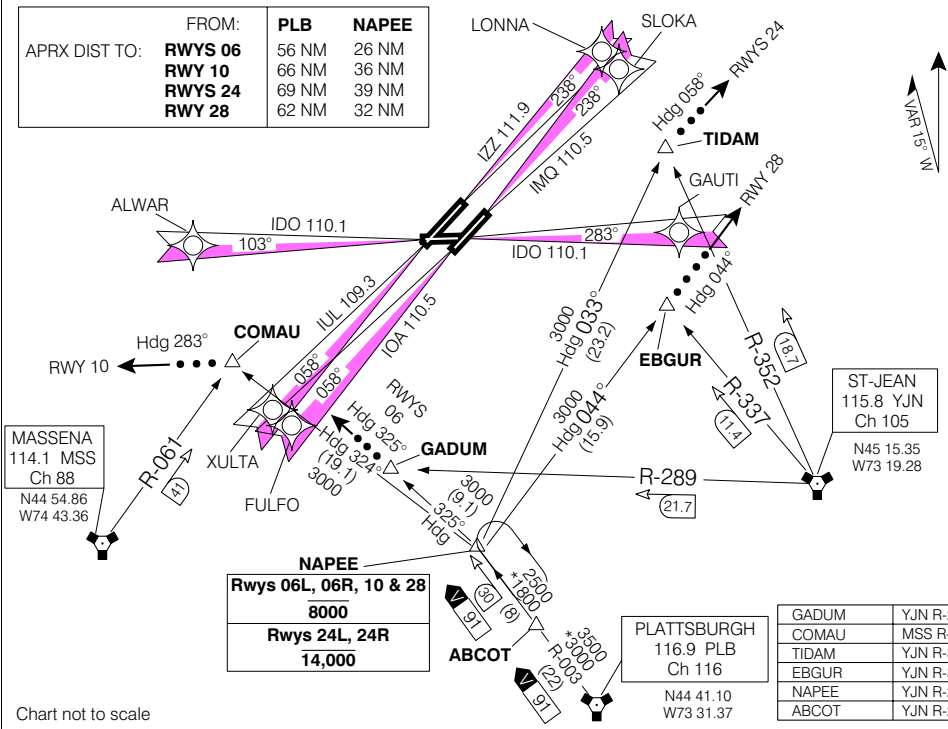


Chart not to scale

PLATTSBURGH SIX ARR (PLB, PLB 6)

MONTREAL/PIERRE ELLIOTT TRUDEAU INTL  
MONTREAL, QC

EFF 16 FEB 06

CHANGE: Proccident: NAPEE; ARR

NAD83