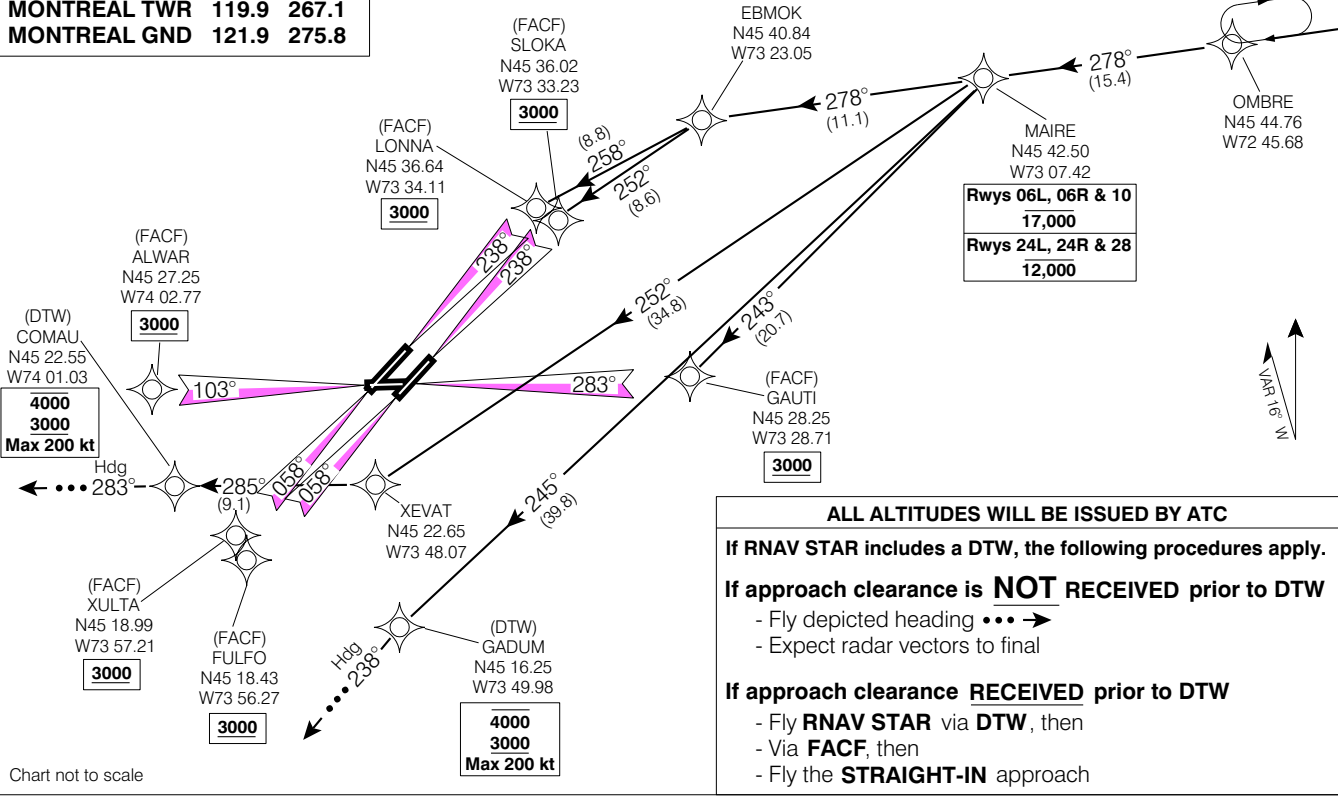


STAR (RNAV)

OMBRE SEVEN ARR (OMBRE: OMBRE 7)

MONTREAL/PIERRE ELLIOTT TRUDEAU INTL
MONTREAL QC
Geomatix Canada

MONTREAL ATIS	133.7 (Eng)
	127.5 (Fr)
MONTREAL ARR	118.9 124.65
	126.9 132.85
	268.3
MONTREAL TWR	119.9 267.1
MONTREAL GND	121.9 275.8



Rwys 06L, 06R & 10	17,000
Rwys 24L, 24R & 28	12,000

ALL ALTITUDES WILL BE ISSUED BY ATC

If RNAV STAR includes a DTW, the following procedures apply.

If approach clearance is NOT RECEIVED prior to DTW

- Fly depicted heading ... →
- Expect radar vectors to final

If approach clearance RECEIVED prior to DTW

- Fly RNAV STAR via DTW, then
- Via FACF, then
- Fly the STRAIGHT-IN approach

Chart not to scale

OMBRE SEVEN ARR (OMBRE: OMBRE 7)

EFF-16 FEB 06

CHANGE: ARR

MONTREAL/PIERRE ELLIOTT TRUDEAU INTL

VAR 16° W (1999)

MONTREAL QC
MONTREAL INTL
NAD83