

STAR
MAIRE FIVE ARR (MAIRE, MAIRE 5)

MONTREAL/PIERRE ELLIOTT TRUDEAU INTL
Geomatics Canada
MONTREAL QC

ALL RWYS

ISSUANCE OF AN ARRIVAL CLEARANCE REQUIRES THE PILOT TO FLY THE PUBLISHED ARRIVAL FLIGHT PATH AND MAINTAIN THE LAST ASSIGNED ALTITUDE.

RWYS 06L & 06R

.... From **MAIRE** direct "**ZHU**" then via **track 246°** to **GADUM**. Then continue on **Hdg 238°** unless cleared for an approach. Cross MAIRE at 17,000' or below.

RWY 10

.... From **MAIRE** via **MSS R-068** to **XEVAT** then **Hdg 284°** or direct **COMAU**. Then continue on **Hdg 283°** unless cleared for an approach. Cross MAIRE at 17,000' or below.

RWYS 24L & 24R

.... From **MAIRE** via **YUL R-097** proceed to **EBMOK**. Then continue on **Hdg 277°** unless cleared for an approach. Cross MAIRE at 12,000' or below.

RWY 28

.... From **MAIRE** direct "**ZHU**" then via **track 241°** to **GAUTI**. Then continue on **Hdg 241°** unless cleared for an approach. Cross MAIRE at 12,000' or below.

MAIRE	YUL R-097 / 36.1 DME	N45 42.50 / W073 07.42
EBMOK	YUL R-097 / 25 DME	N45 40.84 / W073 23.05
GADUM	YJN R-289 / 21.7 DME	N45 16.25 / W073 49.98
GAUTI	YJN R-351 / 14.5 DME	N45 28.25 / W073 28.71
XEVAT	MSS R-068 / 48 DME	N45 22.65 / W073 48.07
COMAU	MSS R-061 / 41 DME	N45 22.55 / W074 01.03

FROM:	MAIRE
RWYS 06	57 NM
RWY 10	58 NM
RWYS 24	32 NM
RWY 28	33 NM

APRX DIST TO:

COMMUNICATION FAILURE

1. Select mode C/3 code 7600
2. 3 minutes after selecting 7600, and not prior 60 DME from YUL, descend to MEA following the STAR routing to the IAF or IF, as applicable.
3. At IF, execute a straight-in approach for landing.

MONTREAL ATIS	133.7 (Eng)
	127.5 (Fr)
MONTREAL ARR	118.9 124.65
	126.9 132.85
	268.3
MONTREAL TWR	119.9 267.1
MONTREAL GND	121.9 275.8

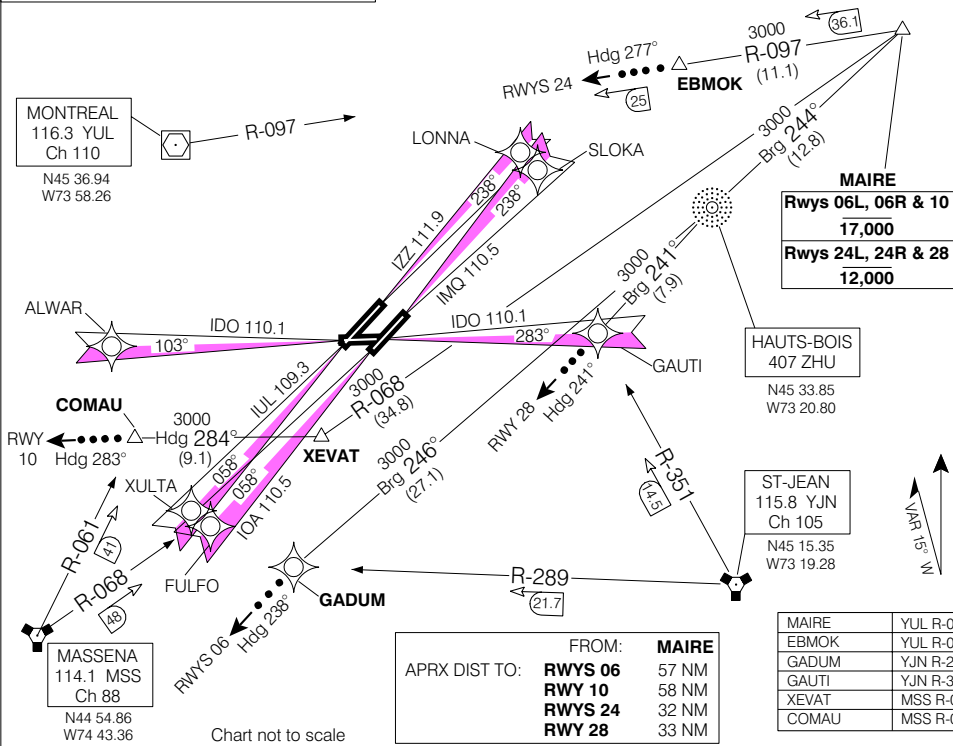


Chart not to scale

Source of Canadian Civil Aeronautical Data: © 2006 NAV CANADA

© 2006 Her Majesty The Queen in Right of Canada, Department of Natural Resources

MAIRE FIVE ARR (MAIRE, MAIRE 5)

EFF-16 FEB 06

CHANGE: ARR

MONTREAL/PIERRE ELLIOTT TRUDEAU INTL

MONTREAL QC
MAD93 ♦