

SID RNAV (GNSS)

**HUMUS ONE DEP** (HMUS 1.)

MONTRÉAL/PIERRE ELLIOTT TRUDEAU INTL  
MONTRÉAL QC

**VOT 115.7**  
**ATIS 133.7 (Eng) 127.5 (Fr)**  
**CLNC DEL 125.6**  
**APRON MONTREAL 122.075**  
**GND 121.9 275.8**  
**TWR 119.9 267.1**  
**DEP SE-S-SW 118.9**  
**W-NW-NE 124.65**  
**268.3**

For use by GNSS equipped aircraft.  
GNSS aircraft with selectable CDI  
must be set to 1NM sensitivity.  
Aircraft without selectable CDI  
must use flight director.



RWY	VNAP
06L&R	A or B
10	A or B
24L&R	A or B
28	A or B

HUMUS  
N45 04.49  
W74 04.49

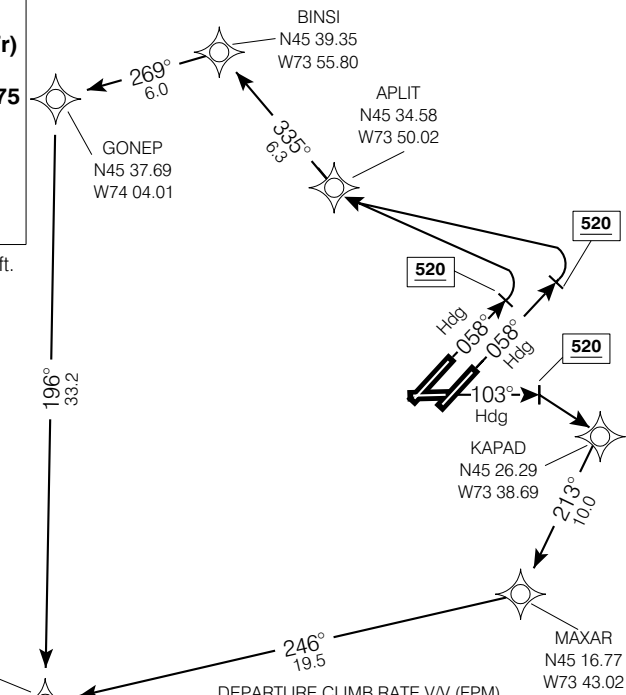


Chart not to scale

**DEPARTURE ROUTE DESCRIPTION**

**All Rwys:** Maintain 5000' ASL or as assigned. For all turns below 10,000' ASL, maximum 250 kt.

**Rwys 06L & R:** ½ - Do not exceed 220 kt until APLIT. Requires a minimum CLB gradient of 500 ft/NM until BINSI.

1. Climb Hdg 058° to 520' ASL, then
2. LEFT climbing turn direct to APLIT, then
3. To BINSI on track 335°, then
4. To GONEP on track 269°, then
5. To HUMUS on track 196° to the assigned route.

**Rwy 10:** ½ - Do not exceed 220 kt until KAPAD. Requires a minimum CLB gradient of 500 ft/NM until MAXAR.

1. Climb Hdg 103° to 520' ASL, then
2. RIGHT climbing turn direct to KAPAD, then
3. To MAXAR on track 213°, then
4. To HUMUS on track 246° to the assigned route.

**COMMUNICATION FAILURE**

1. Select mode C/3 code 7600
2. Proceed as published at the last assigned altitude, then
3. Climb to flight planned altitude 5 minutes after take-off.

NOTE: Refer to Noise Abatement Procedures for additional requirements.

**HUMUS ONE DEP** (HMUS 1.)

MONTRÉAL QC

EFF 13 APR 06

CHANGE: GPS to GNSS

MONTRÉAL/PIERRE ELLIOTT TRUDEAU INTL

NAD83