

STAR
DORVAL SIX ARR (YMX: YUL 6)

MONTREAL/PIERRE ELLIOTT TRUDEAU INTL
Geonatics Canada

ALL RWYS

ISSUANCE OF AN ARRIVAL CLEARANCE REQUIRES THE PILOT TO FLY THE PUBLISHED ARRIVAL FLIGHT PATH AND MAINTAIN THE LAST ASSIGNED ALTITUDE.

RWYS 06L & 06R

.... From **YMX** via **R-130** to **ANTAG** then **Hdg 203°** or direct to **COMAU**. Then continue on **Hdg 238°** unless cleared for an approach.
Cross **ANTAG** at 12,000' or below.

RWY 10

.... From **YMX** via **R-130** to **ANTAG** then **Hdg 208°** or direct **DURUK**. Then continue on **Hdg 208°** unless cleared for an approach.
Cross **ANTAG** at 8000' or below.

RWYS 24L, 24R

.... From **YMX** via **R-130** proceed to **DUDSO**. Then continue on **R-130** unless cleared for an approach.
Cross **ANTAG** at 8000' or below.

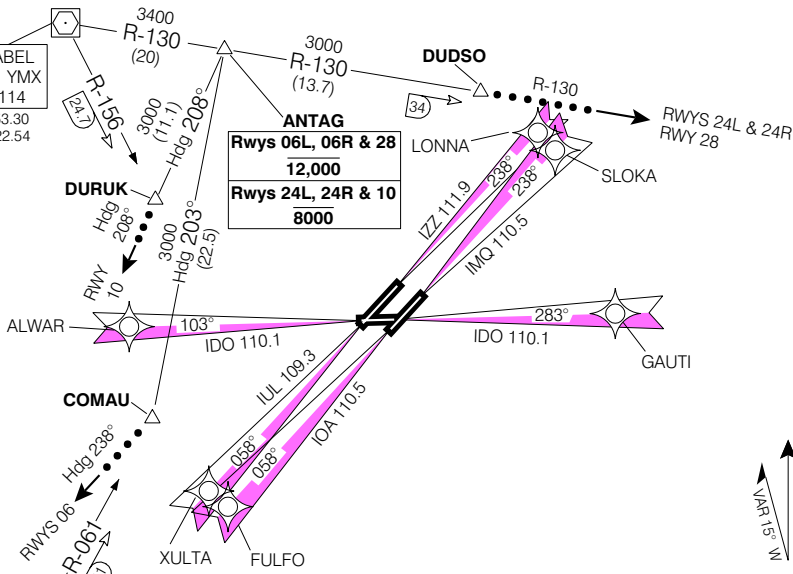
RWY 28

.... From **YMX** via **R-130** proceed to **DUDSO**. Then continue on **R-130** unless cleared for an approach.
Cross **ANTAG** at 12,000' or below.

COMMUNICATION FAILURE

1. Select mode C/3 code 7600.
2. 3 minutes after selecting 7600, and not prior 40 DME from **YMX**, descend to **MEA** following the **STAR** routing to the **IAF** or **IF**, as applicable.
3. At **IF**, execute a straight-in approach for landing.

MONTREAL ATIS	133.7 (Eng)
	127.5 (Fr)
MONTREAL ARR	118.9 124.65
	126.9 132.85
	268.3
MONTREAL TWR	119.9 267.1
MONTREAL GND	121.9 275.8



Rwys 06L, 06R & 28	12,000
Rwys 24L, 24R & 10	8000

FROM:	YMX
APRX DIST TO:	RWYS 06 59 NM
	RWY 10 50 NM
	RWYS 24 50 NM
	RWY 28 59 NM

DURUK	YMX R-156 / 24.7 DME	N45 34.05 / W074 00.39
DUDSO	YMX R-130 / 33.7 DME	N45 38.90 / W073 39.03
ANTAG	YMX R-130 / 20 DME	N45 44.80 / W073 56.66
COMAU	MSS R-061 / 41 DME	N45 22.55 / W074 01.03

Chart not to scale

DORVAL SIX ARR (YMX: YUL 6)

MONTREAL/PIERRE ELLIOTT TRUDEAU INTL
MONTREAL QC

EFF-16 FEB 06

CHANGE: Revised

MAD83

NOT FOR
NAVIGATION