

STAR (RNAV)
CEDAR SEVEN ARR (FRANX, CEDAR 7)
MONTREAL/PIERRE ELLIOTT TRUDEAU INTL
MONTREAL OC
Geomatics Canada

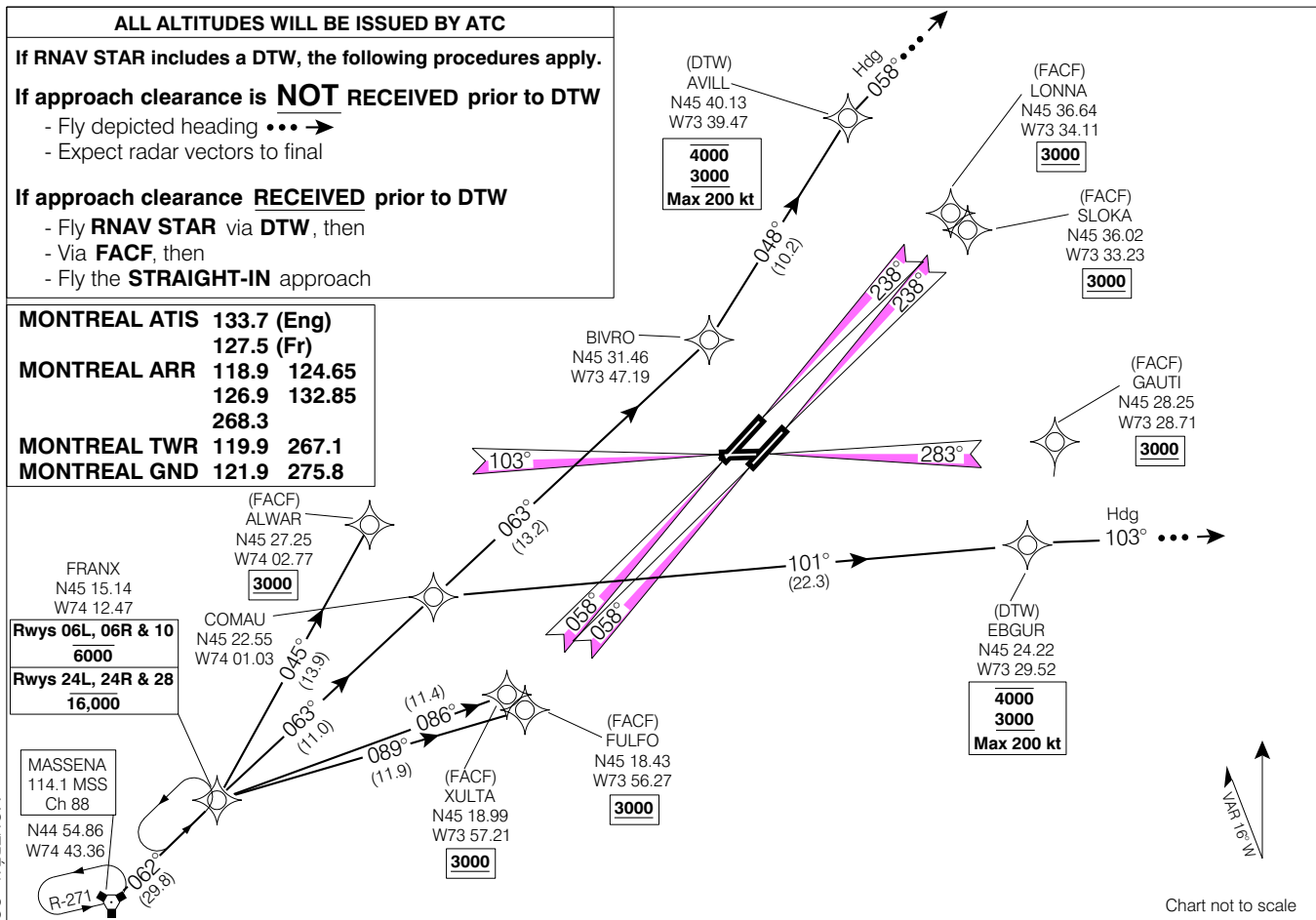


Chart not to scale

ALL ALTITUDES WILL BE ISSUED BY ATC

If RNAV STAR includes a DTW, the following procedures apply.

If approach clearance is **NOT RECEIVED** prior to DTW

- Fly depicted heading $\dots \rightarrow$
- Expect radar vectors to final

If approach clearance **RECEIVED** prior to DTW

- Fly **RNAV STAR** via **DTW**, then
- Via **FACF**, then
- Fly the **STRAIGHT-IN** approach

MONTREAL ATIS	133.7 (Eng)	
	127.5 (Fr)	
MONTREAL ARR	118.9 124.65	
	126.9 132.85	
	268.3	
MONTREAL TWR	119.9 267.1	
MONTREAL GND	121.9 275.8	

Rwys 06L, 06R & 10	6000
Rwys 24L, 24R & 28	16,000

MASSENA
114.1 MSS
Ch 88
N44 54.86
W74 43.36

(FACF)
ALWAR
N45 27.25
W74 02.77
3000

COMAU
N45 22.55
W74 01.03

(FACF)
FULFO
N45 18.43
W73 56.27
3000

(FACF)
XULTA
N45 18.99
W73 57.21
3000

(FACF)
LONNA
N45 36.64
W73 34.11
3000

(FACF)
SLOKA
N45 36.02
W73 33.23
3000

(FACF)
GAUTI
N45 28.25
W73 28.71
3000

(DTW)
EBGUR
N45 24.22
W73 29.52
4000
3000
Max 200 kt

(DTW)
AVILL
N45 40.13
W73 39.47
4000
3000
Max 200 kt

BIVRO
N45 31.46
W73 47.19

EFF 16 FEB 06

CHANGE: ARR

CEDAR SEVEN ARR

(FRANX, CEDAR 7)

VAR 16° W (1989)

MONTREAL/PIERRE ELLIOTT TRUDEAU INTL

MONTREAL OC
MAD83