

STAR (RNAV)  
ANTAG ONE ARR (YMX: ANTAG 1)

MONTREAL/PIERRE ELLIOTT TRUDEAU INTL  
Geomatics Canada  
MONTREAL OC

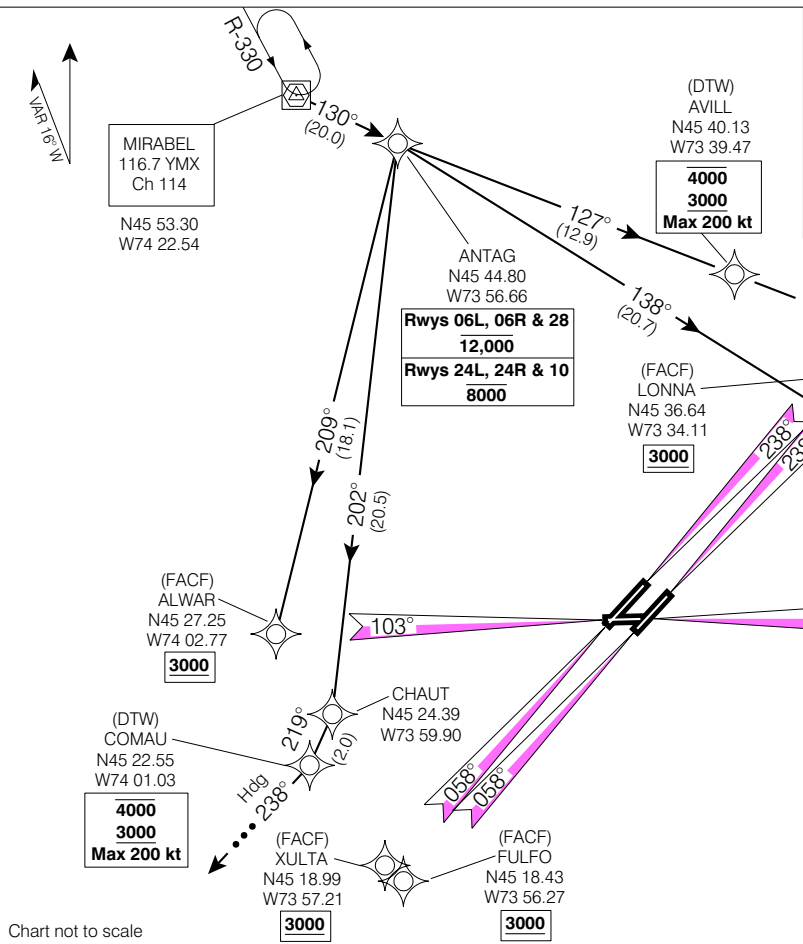
**ALL ALTITUDES WILL BE ISSUED BY ATC**

If RNAV STAR includes a DTW, the following procedures apply.  
If approach clearance is **NOT** RECEIVED prior to DTW

- Fly depicted heading **•••** →
- Expect radar vectors to final

If approach clearance **RECEIVED** prior to DTW

- Fly **RNAV STAR** via DTW, then
- Via **FACTF**, then
- Fly the **STRAIGHT-IN** approach



MONTREAL ATIS	133.7 (Eng)	
	127.5 (Fr)	
MONTREAL ARR	118.9	124.65
	126.9	132.85
	268.3	
MONTREAL TWR	119.9	267.1
MONTREAL GND	121.9	275.8

ANTAG ONE ARR (YMX: ANTAG 1)  
EFF: 16 FEB 06  
CHANGE: Procedure Ident: ANTAG: ARR

VAR: 16° W (1999)  
MONTREAL OC  
MONTREAL/PIERRE ELLIOTT TRUDEAU INTL  
MND83

NOT FOR  
NAVIGATION