

SID (VECTOR)

SAINT JOHN TWO DEP (YSJ 2.)

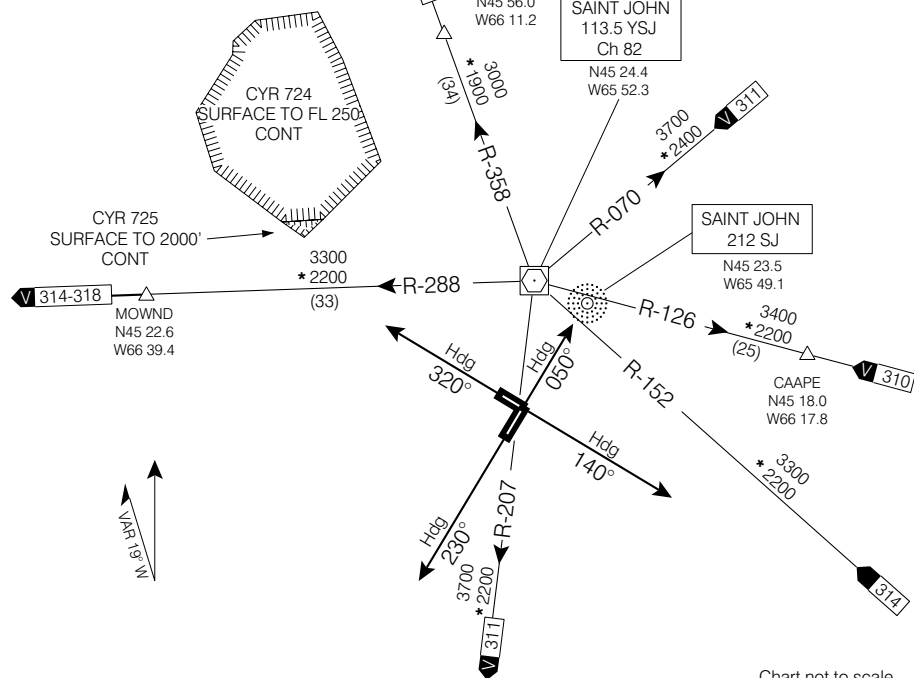
SAINT JOHN NEW BRUNSWICK

SAINT JOHN NB

RADIO 118.5 (MF 5 NM)
236.6
DEP MONCTON CENTRE
124.3 270.8

CLIMB TO AND
MAINTAIN 5000 ASL

Danger: Live firing within CYR 724.



DEPARTURE ROUTE DESCRIPTION

Rwys 05, 23 & 14: 1. Climb rwy heading for vectors.
 2. Maintain 5000 ASL or as assigned.

Rwys 32: 1. Climb rwy heading for vectors.
 No turns below 900.
 2. Maintain 5000 ASL or as assigned.

CAUTION : CYR 724/725 16 NM NW OF APRT

COMMUNICATION FAILURE - TRANSPONDER MODE A/3 CODE 7600

On recognition of communication failure 10 minutes or less after take-off and in IFR weather conditions proceed as follows:

1. Upon reaching last assigned altitude proceed directly on course;
2. Maintain last assigned altitude for 10 minutes after take-off; then
3. Climb to flight planned altitude.

Note: If communication failure occurs more than 10 minutes after take-off, comply with the appropriate procedure for communication failure enroute.

SAINT JOHN TWO DEP (YSJ 2.)

SAINT JOHN NB

EFF 13 APR 06

CHANGE: Editorial

SAINT JOHN NEW BRUNSWICK

NAD83