

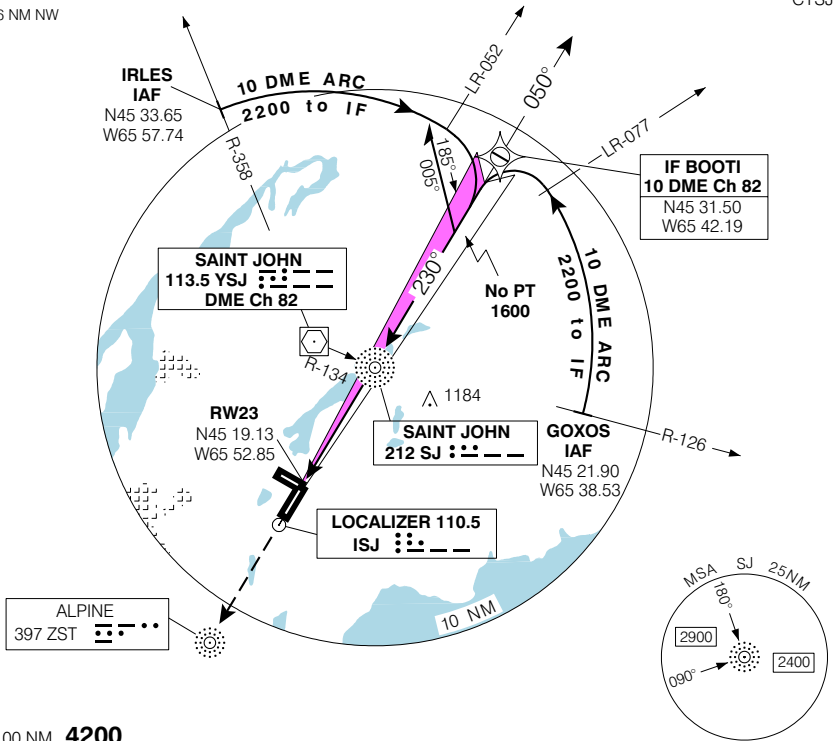
SAINT JOHN NEW BRUNSWICK
SAINT JOHN NB

ILS or NDB RWY 23 (GNSS)

ARR/DEP MONCTON CENTRE 124.3 270.8	RADIO 118.5 (MF 5 NM) 236.6	ELEV 357
		TDZE 23 304

CYSJ

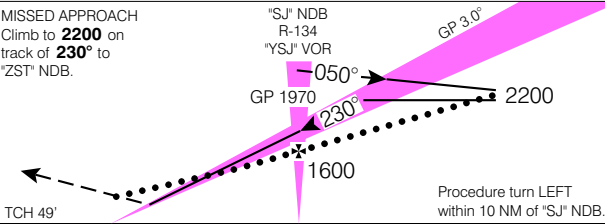
CYR 724 16 NM NW of aprt.



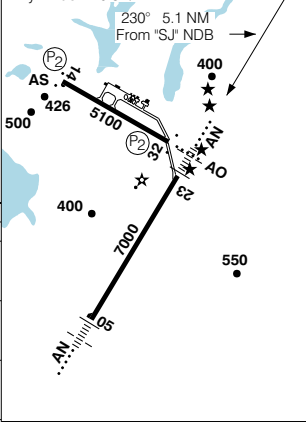
SAFE ALT 100 NM **4200**

MISSED APPROACH
Climb to **2200** on track of **230°** to "ZST" NDB.

"SJ" NDB
R-134
"YSJ" VOR



Rwy 14 down 0.84%



CATEGORY	A	B	C	D
ILS	504	(200)	½ RVR 26	
LOC LOC/VOR	800	(496)	1 RVR 50	
NDB	1000	(696)	1 ¾	
CIRCLING	1000	(643)	2	1160
				(803)

"SJ" NDB to MAP 5.1 NM					
Knots	70	90	110	130	150
Min:Sec	4:22	3:24	2:47	2:21	2:02

ILS or NDB RWY 23 (GNSS)

EFF 13 APR 06 CHANGE: GPS to GNSS

N45 18 58 W65 53 25 VAR 19° W

SAINT JOHN NB
SAINT JOHN NEW BRUNSWICK

NAD83