

SID (VECTOR)

GANDER THREE DEP (YQX 3.)

GANDER INTL
GANDER NL

VOT 114.8
 ATIS 124.8
 GND 121.9 275.8
 TWR 118.1 236.6
 DEP 128.5 132.1 384.5
 CENTRE 132.1 134.45
 342.9

CLIMB TO AND MAINTAIN 5000' ASL

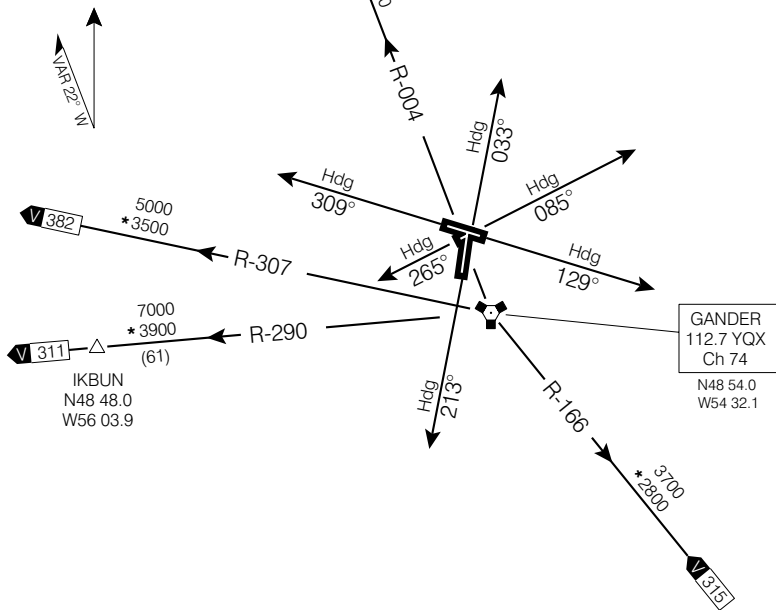


Chart not to scale

DEPARTURE ROUTE DESCRIPTION

- ALL RUNWAYS:**
1. Climb rwy hdg for vectors.
 2. Maintain 5000' ASL or as assigned.

COMMUNICATION FAILURE - TRANSPONDER MODE A/3 CODE 7600

On recognition of communication failure 10 minutes or less after take-off and in IFR weather conditions proceed as follows:

1. Upon reaching last assigned altitude proceed directly on course;
2. Maintain last assigned altitude for 10 minutes after take-off; then
3. Climb to flight planned altitude, except in the case of Trans Atlantic departures, climb to the altitude specified in the Oceanic Clearance.

Note: If communication failure occurs more than 10 minutes after take-off, comply with the appropriate procedure for communication failure enroute.

GANDER THREE DEP (YQX 3.)

EFF 13 APR 06 CHANGE: Editorial

GANDER NL
 GANDER INTL
 NAD83