

STAR (RNAV)  
DELGI ONE ARR (DELGI DELGI 1)

THUNDER BAY ON THUNDER BAY

**ALL ALTITUDES WILL BE ISSUED BY ATC**

**If RNAV STAR includes a DTW, the following procedures apply.**

**If approach clearance is NOT RECEIVED prior to DTW**

- Fly depicted heading ... ➔
- Expect radar vectors to final

**If approach clearance RECEIVED prior to DTW**

- Fly RNAV STAR via DTW, then
- Via **FACF**, then
- Fly the **STRAIGHT-IN** approach

● ATIS	128.8	285.3
● ARR	119.2	363.8
● TWR	118.1	236.6
● GND	121.9	275.8

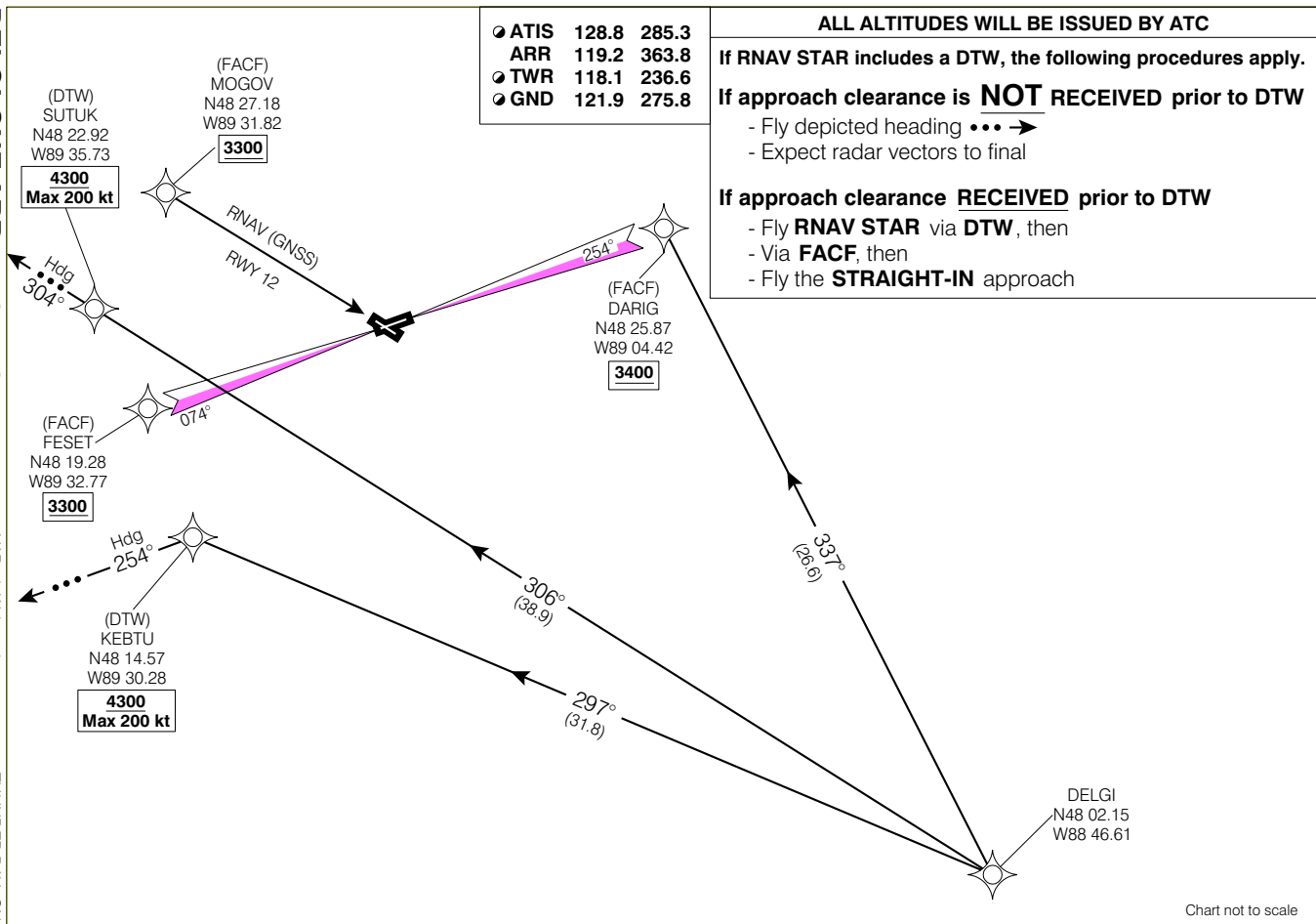


Chart not to scale

© 2006 Her Majesty The Queen in Right of Canada, Department of Natural Resources All rights reserved

Source of Canadian Civil Aeronautical Data: © 2006 NAV CANADA All rights reserved

DELGI ONE ARR (DELGI DELGI 1)  
EFF 13 APR 06  
CHANGE: GPS to GNSS

VAR 3° W (2003)

THUNDER BAY ON THUNDER BAY  
NAD83

NOT FOR NAVIGATION