

STAR (RNAV)  
**ALMEX ONE ARR** (ALMEX:ALMEX 1)

THUNDER BAY  
THUNDER BAY ON

**ALL ALTITUDES WILL BE ISSUED BY ATC**

**If RNAV STAR includes a DTW, the following procedures apply.**

**If approach clearance is NOT RECEIVED prior to DTW**

- Fly depicted heading **••• →**
- Expect radar vectors to final

**If approach clearance RECEIVED prior to DTW**

- Fly **RNAV STAR** via **DTW**, then
- Via **FACF**, then
- Fly the **STRAIGHT-IN** approach

☉ ATIS	128.8	285.3
☉ ARR	119.2	363.8
☉ TWR	118.1	236.6
☉ GND	121.9	275.8

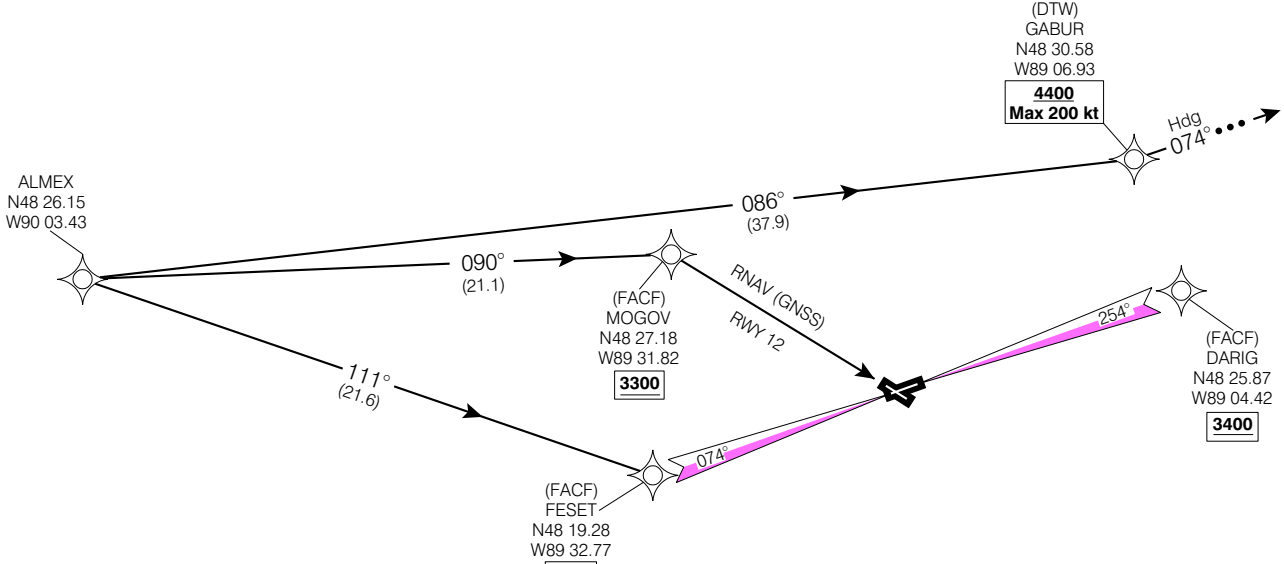


Chart not to scale

© 2006 Her Majesty The Queen in Right of Canada, Department of Natural Resources All rights reserved. Source of Canadian Civil Aeronautical Data: © 2006 NAV CANADA All rights reserved

**ALMEX ONE ARR** (ALMEX:ALMEX 1)  
EFF 13 APR 06 CHANGE: GPS to GNSS

VAR 3° W (2003)

THUNDER BAY ON  
THUNDER BAY  
NAD83

NOT FOR  
NAVIGATION