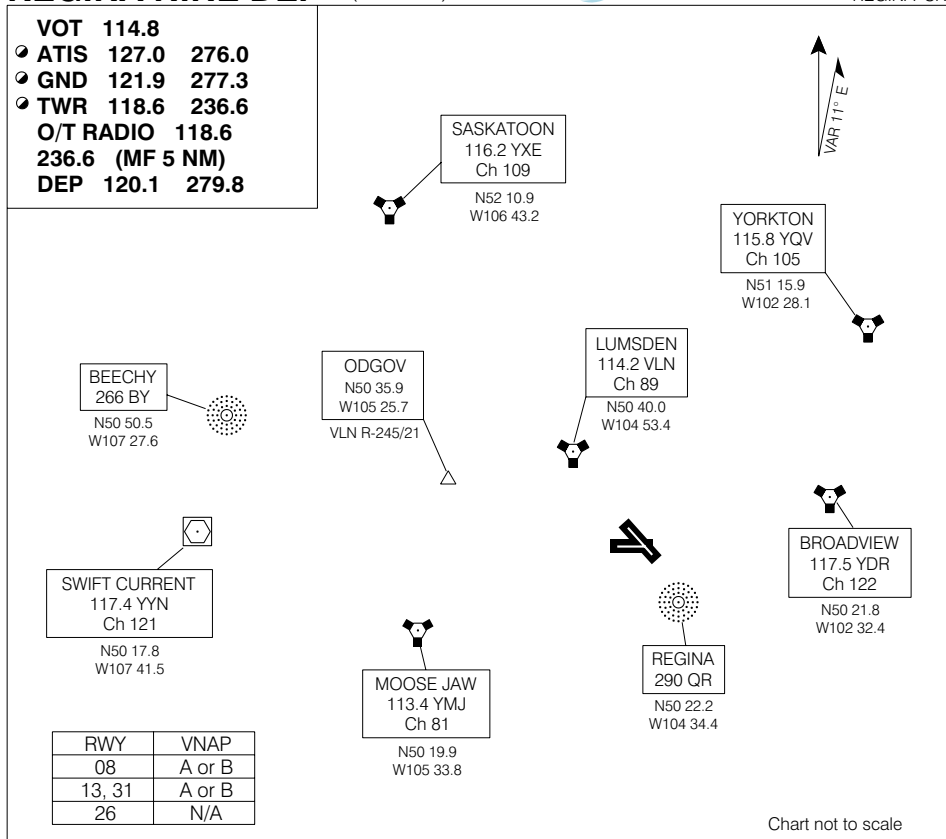




SID (VECTOR)

REGINA NINE DEP (CYQR 9.)

REGINA INTL
REGINA SK



RWY	VNAP
08	A or B
13, 31	A or B
26	N/A

Chart not to scale

DEPARTURE ROUTE DESCRIPTION

ALL RUNWAYS: Climb rwy hdg or as assigned by ATC. MAINTAIN 5000 ASL or flight planned altitude, whichever is lower. Anticipate radar vectors to filed/assigned route. Expect clearance to flight planned altitude/flight level within 10 minutes after departure.

NOTE: Refer to Noise Abatement Procedures for additional requirements.

COMMUNICATION FAILURE

Transponder mode A/3 code 7600. On recognition of a communications failure 10 minutes or less after take-off, and in IFR weather conditions:

1. Upon reaching last assigned altitude proceed directly on course;
2. Maintain last assigned altitude until 10 minutes after take-off;
3. Climb to flight planned altitude.

NOTE: If communications failure occurs more than 10 minutes after take-off, comply with the appropriate procedure for communication failure enroute.

REGINA NINE DEP (CYQR 9.)

REGINA SK
REGINA INTL
NAD83

EFF 16 FEB 06 CHANGE: Intrx DATSO to ODGOV;
proc ident

© 2006 Her Majesty The Queen in Right of Canada, Department of Natural Resources

Source of Canadian Civil Aeronautical Data: © 2006 NAV CANADA