

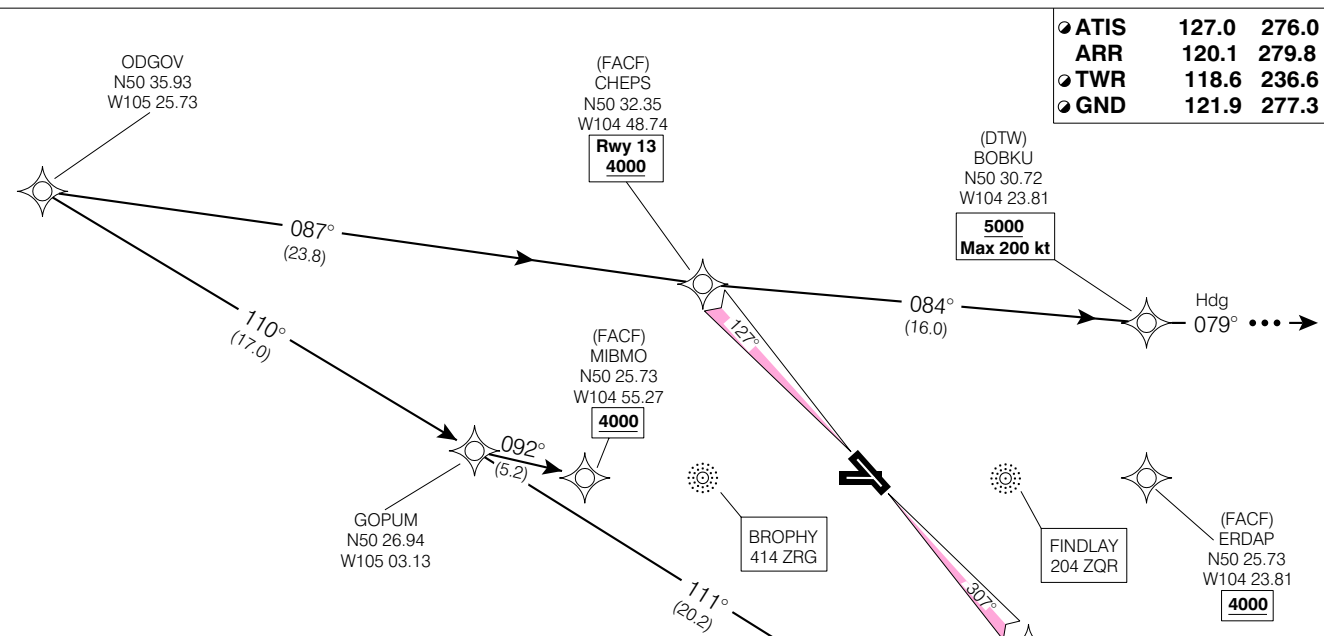
STAR (RNAV)

ODGOV ONE ARR (ODGOV, ODGOV 1)

REGINA INTL

REGINA SK

● ATIS	127.0	276.0
● ARR	120.1	279.8
● TWR	118.6	236.6
● GND	121.9	277.3



ALL ALTITUDES WILL BE ISSUED BY ATC

If RNAV STAR includes a DTW, the following procedures apply.

If approach clearance is NOT RECEIVED prior to DTW

- Fly depicted heading $\dots \rightarrow$
- Expect radar vectors to final

If approach clearance RECEIVED prior to DTW

- Fly RNAV STAR via DTW, then
- Via FACF, then
- Fly the STRAIGHT-IN approach

Chart not to scale

ODGOV ONE ARR (ODGOV, ODGOV 1)

EFF 13 APR 06

CHANGE: ODGOV coords

VAR 11° E (2003)

REGINA INTL
NAD83