

STAR (RNAV)
KEMKA ONE ARR (KEMKA, KEMKA 1)



REGINA INTL
REGINA SK

ALL ALTITUDES WILL BE ISSUED BY ATC

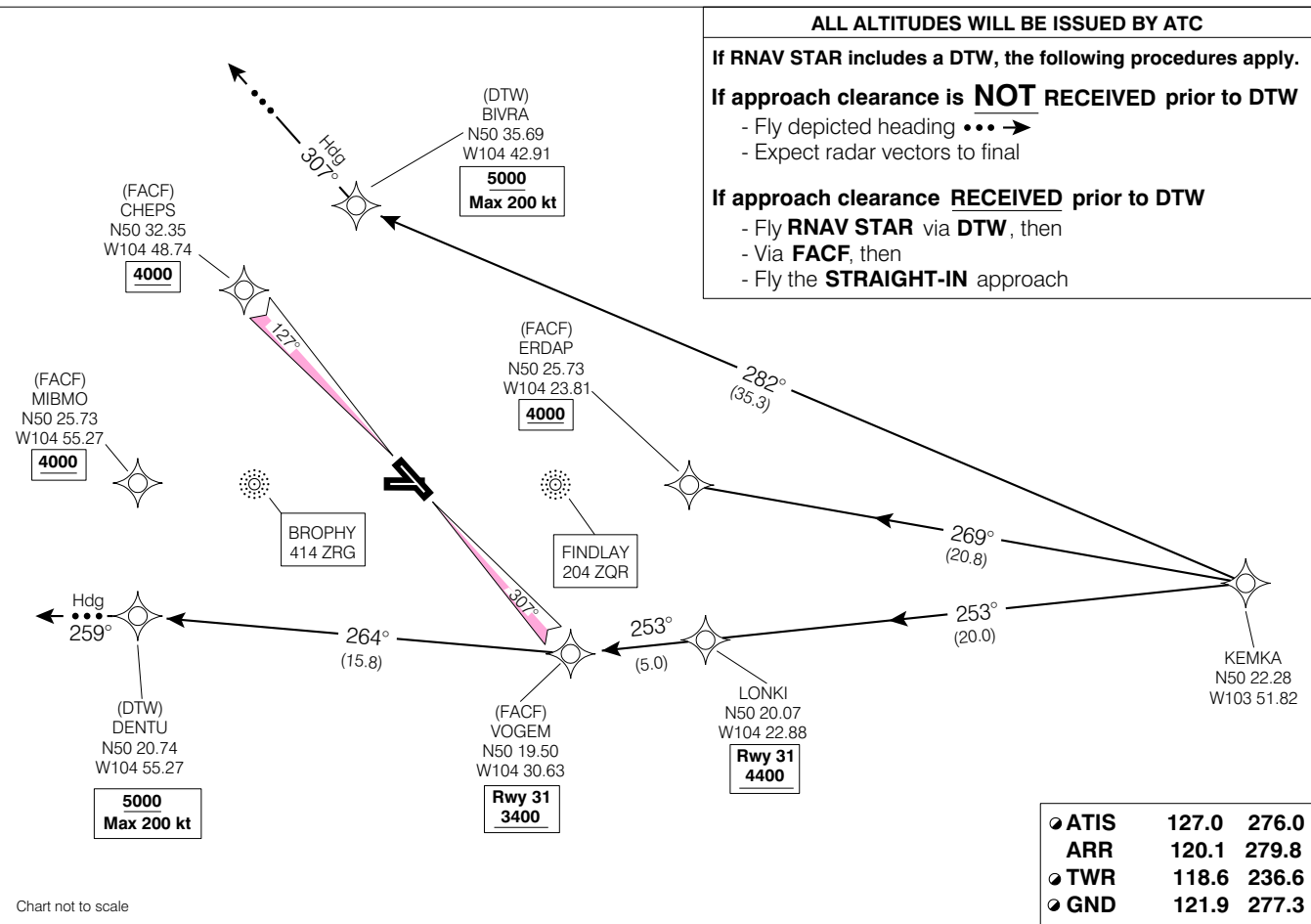
If RNAV STAR includes a DTW, the following procedures apply.

If approach clearance is NOT RECEIVED prior to DTW

- Fly depicted heading $\dots \rightarrow$
- Expect radar vectors to final

If approach clearance RECEIVED prior to DTW

- Fly **RNAV STAR** via **DTW**, then
- Via **FACF**, then
- Fly the **STRAIGHT-IN** approach



© 2005 Her Majesty The Queen in Right of Canada, Department of Natural Resources

Source of Canadian Civil Aeronautical Data: © 2005 NAV CANADA

Chart not to scale

KEMKA ONE ARR (KEMKA, KEMKA 1)
EFF 22 DEC 05
CHANGE: New STAR RNAV

VAR 11° E (2003)

REGINA SK
REGINA INTL
NAD83