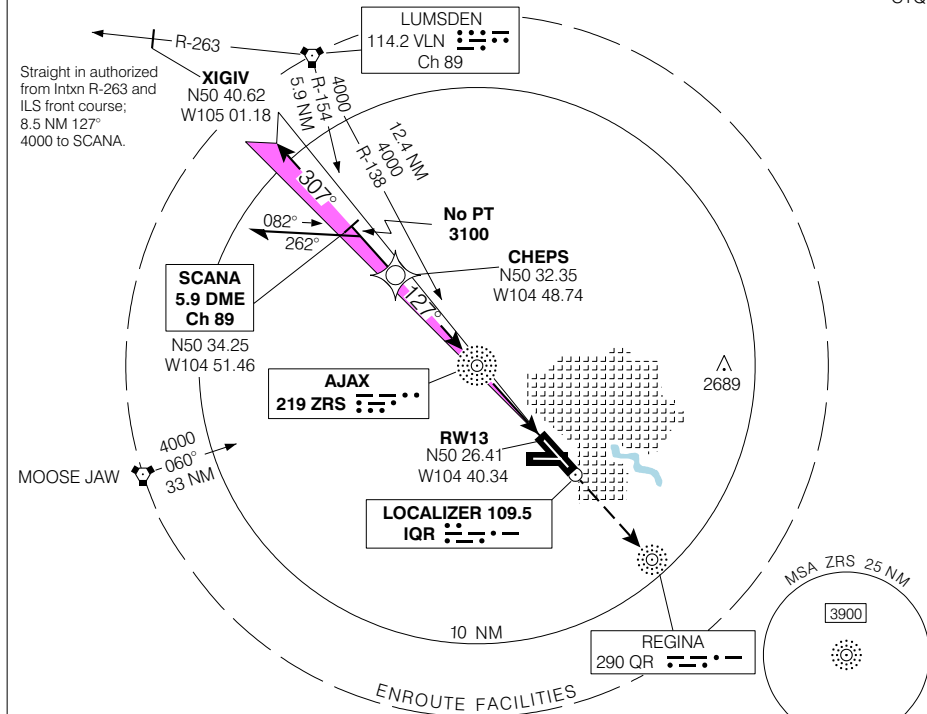


ILS or NDB RWY 13 (GNSS)

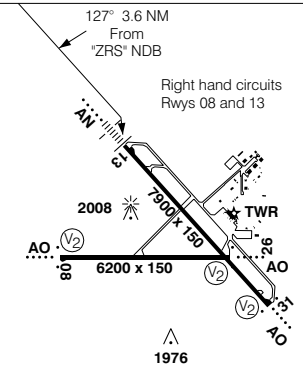
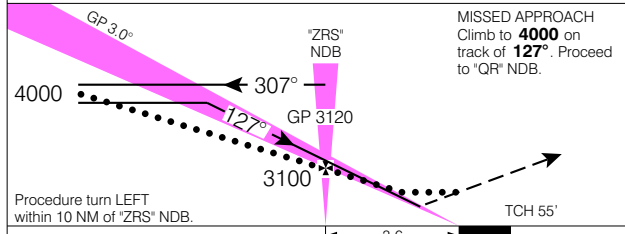
REGINA INTL
REGINA SK

● ATIS 127.0 276.0	ARR 120.1 279.8	● TWR 118.6 236.6 O/T RDO 118.6 236.6 (MF 5 NM)	● GND 121.9 277.3	DEP 120.1 279.8	ELEV 1894 TDZE 13 1894
---------------------------------	------------------------------	--	--------------------------------	------------------------------	---

CYQR



SAFE ALT 100 NM **4800**



CATEGORY	A	B	C	D
ILS	2094	(200)	½ RVR 26	
LOC	2200	(306)	1 RVR 50	
NDB	2360	(466)	1 RVR 50	
CIRCLING	2400 (506)	1 ½	2400 (506)	2520 (626)
			2	2

*ZRS' NDB to MAP 3.6 NM					
Knots	70	90	110	130	150
Min:Sec	3:05	2:24	1:58	1:40	1:26

ILS or NDB RWY 13 (GNSS)

EFF 13 APR 06

CHANGE: GPS to GNSS

N50 25 55 W104 39 57

VAR 11° E

REGINA SK
REGINA INTL
NAD83