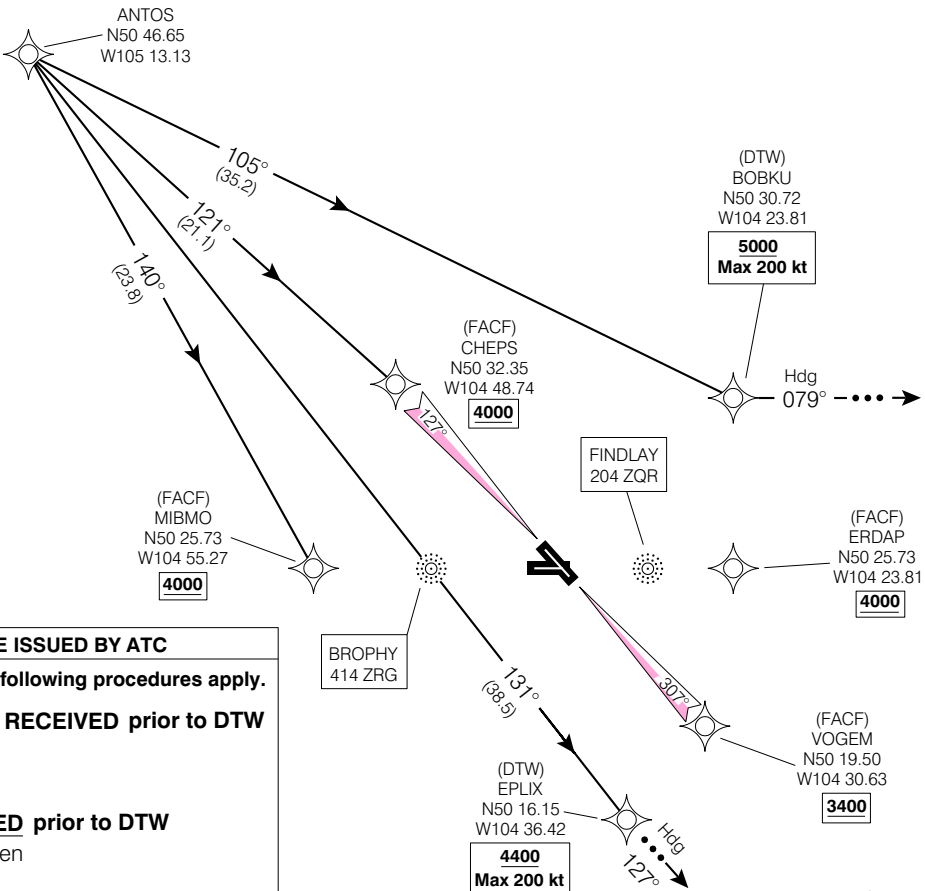


STAR (RNAV)
ANTOS ONE ARR (ANTOS, ANTOS 1)



REGINA INTL
REGINA SK

Chart not to scale



● ATIS	127.0	276.0
● ARR	120.1	279.8
● TWR	118.6	236.6
● GND	121.9	277.3

ALL ALTITUDES WILL BE ISSUED BY ATC

If RNAV STAR includes a DTW, the following procedures apply.

If approach clearance is NOT RECEIVED prior to DTW

- Fly depicted heading $\dots \rightarrow$
- Expect radar vectors to final

If approach clearance RECEIVED prior to DTW

- Fly **RNAV STAR** via **DTW**, then
- Via **FACF**, then
- Fly the **STRAIGHT-IN** approach

ANTOS ONE ARR (ANTOS, ANTOS 1)

VAR 11° E (2003)

REGINA INTL
NAD83

CHANGE: New STAR RNAV

EFF 22 DEC 05

NOT FOR NAVIGATION