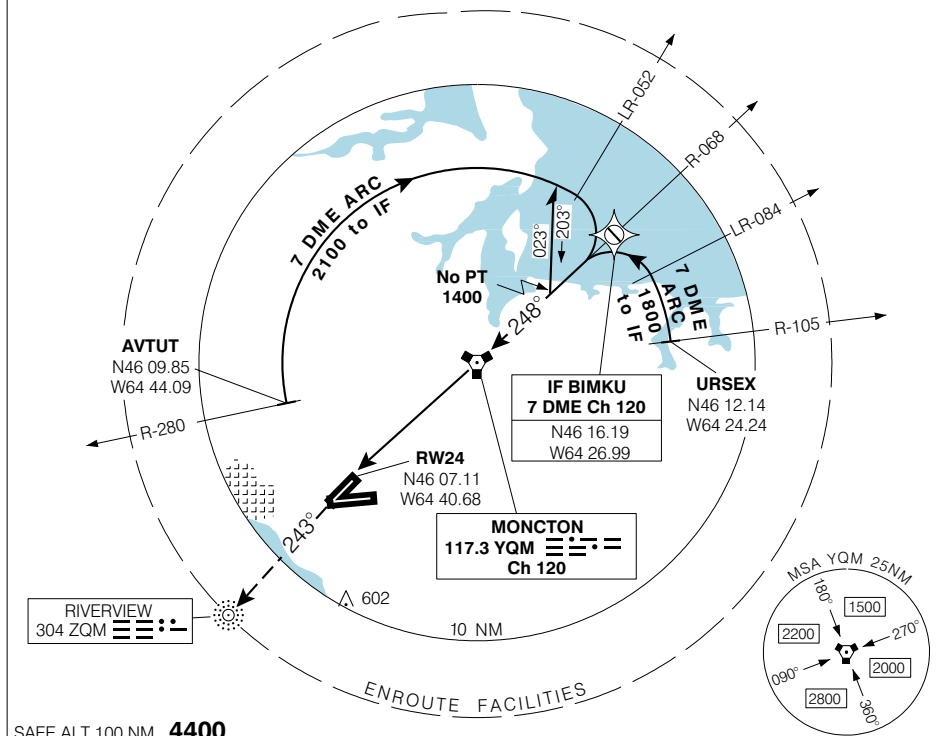


**VOR RWY 24 (GNSS)**

MONCTON/GREATER MONCTON INTL  
MONCTON NB

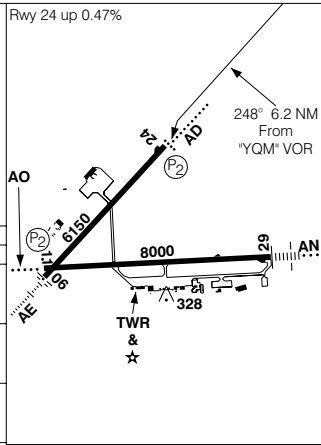
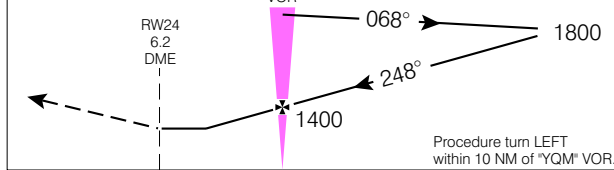
<b>ATIS</b> 128.65	<b>ARR</b> 124.4 384.8	<b>TWR</b> 120.8 236.6	<b>GND</b> 121.8 275.8	<b>DEP</b> 124.4 384.8	<b>ELEV 232</b>
					<b>TDZE 24 213</b>

CYQM



SAFE ALT 100 NM **4400**

**MISSED APPROACH**  
Climb to **2800** on track of **243°** to 'ZQM' NDB.



CATEGORY	A	B	C	D
VOR	<b>560</b>	(347)		1
CIRCLING	<b>740</b>	(508) 1 ½	<b>740</b>	<b>840</b>
			(508) 2	(608) 2

"YQM" to MAP 6.2 NM				
Knots	70	90	110	130 150
Min:Sec	<b>5:19</b>	<b>4:08</b>	<b>3:23</b>	<b>2:52 2:28</b>

**VOR RWY 24 (GNSS)**

N46 06 44 W64 40 43

VAR 20° W

MONCTON NB

EFF 13 APR 06

CHANGE: GPS to GNSS

MONCTON/GREATER MONCTON INTL

NAD83

© 2006 Her Majesty The Queen in Right of Canada, Department of Natural Resources. All rights reserved. Source of Canadian Civil Aeronautical Data: © 2006 NAV CANADA. All rights reserved.