

SID (VECTOR)
MONCTON TWO DEP (CYQM 2.)

MONCTON/GREATER MONCTON INTL
 MONCTON NB

VOT 115.7
ATIS 128.65
GND 121.8 275.8
TWR 120.8 236.6
DEP 124.4 384.8

CLIMB TO AND MAINTAIN 5000' ASL

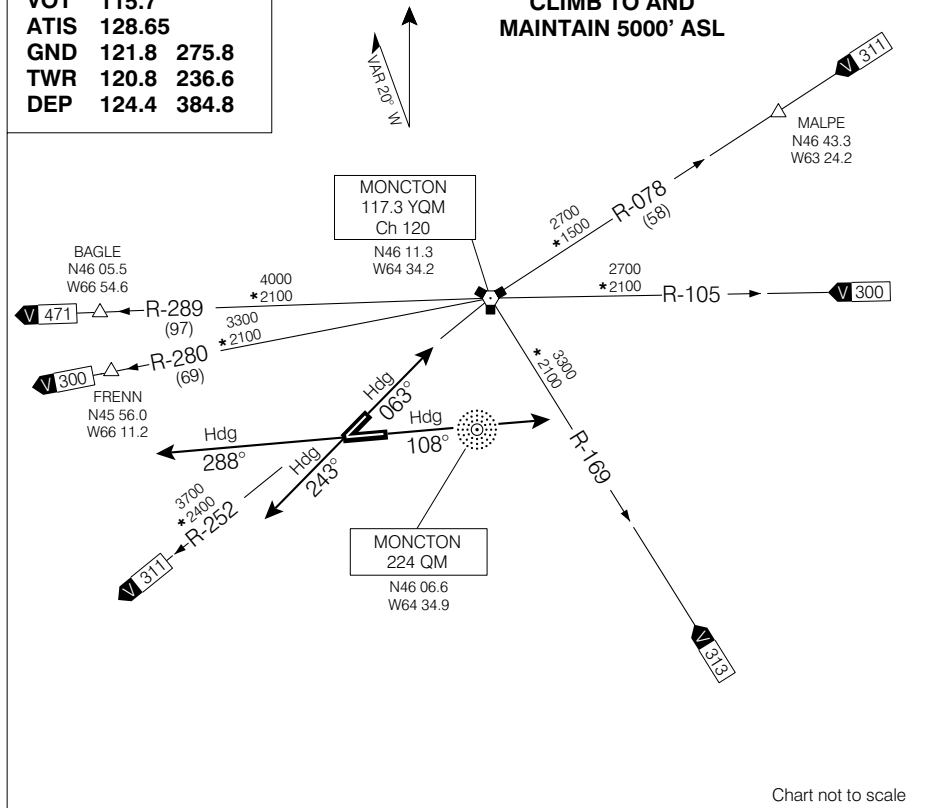


Chart not to scale

DEPARTURE ROUTE DESCRIPTION

- All Runways:**
1. Climb rwy hdg for vectors.
 2. Maintain 5000 ASL as assigned.

COMMUNICATION FAILURE - TRANSPONDER MODE A/3 CODE 7600

On recognition of communication failure 10 minutes or less after take-off and in IFR weather conditions proceed as follows:

1. Upon reaching assigned altitude proceed directly on course;
2. Maintain last assigned altitude for 10 minutes after take-off; then
3. Climb to flight planned altitude.

Note: If communication failure occurs more than 10 minutes after take-off, comply with the appropriate procedure for communication failure enroute.