

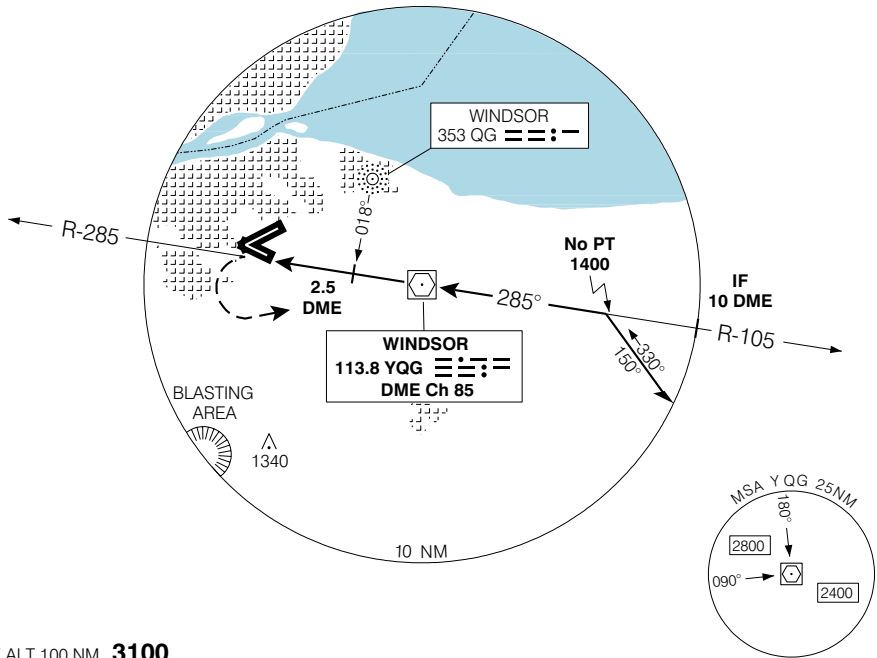
WINDSOR  
WINDSOR ON

**VOR RWY 30**

<b>ATIS</b> 134.5	<b>ARR/DEP</b> DETROIT APCH CTL 126.85 127.5 134.3 363.2 348.3				<b>TWR</b> 124.7 236.6 O/T TFC 124.7 (MF 6 NM)	<b>GND</b> 121.7	<b>ELEV 622</b>
							<b>TDZE 30 621</b>

Verify runway unobstructed when A/G advisory not available.

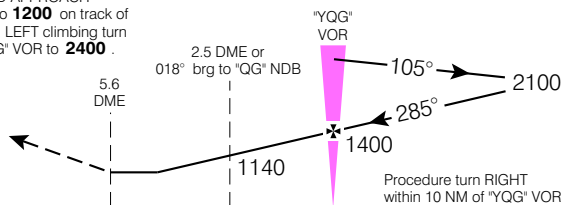
CYQG



SAFE ALT 100 NM **3100**

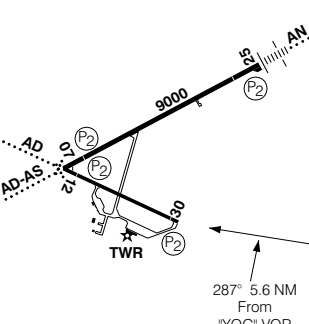
**MISSED APPROACH**

Climb to **1200** on track of **285°**. LEFT climbing turn to "YQG" VOR to **2400**.



ARCAL 124.7(K) (see CFS)

Rwy 12-30 5150 x 150



CATEGORY	A	B	C	D
VOR/DME VOR/NDB	<b>1000</b>	(379)	1 ¼	
VOR	<b>1060</b>	(439)	1 ½	
CIRCLING	<b>1140</b> (518)	1 ¾	<b>1140</b> (518) 2	<b>1240</b> (618) 2

"YQG" VOR to MAP 5.6 NM				
Knots	70	90	110	130 150
Min:Sec	<b>4:48</b>	<b>3:44</b>	<b>3:03</b>	<b>2:36 2:14</b>

**VOR RWY 30**

N42 16 32 W82 57 20

VAR 7° W

WINDSOR ON  
WINDSOR

EFF 13 APR 06

CHANGE: ARR/DEP frequency added

NAD83