

WINDSOR
WINDSOR ON

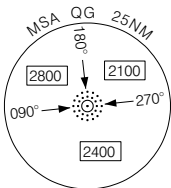
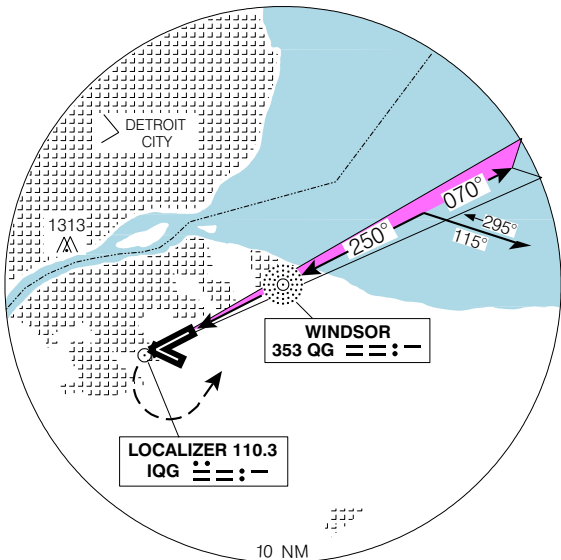
ILS or NDB RWY 25

ATIS 134.5	ARR/DEP DETROIT APCH CTL 126.85 127.5 134.3 363.2 348.3				TWR 124.7 236.6 O/T TFC 124.7 (MF 6 NM)	GND 121.7	ELEV 622
							TDZE 25 608

LOC reliable only within 30° either side of centreline.

Verify runway unobstructed when A/G advisory not available.

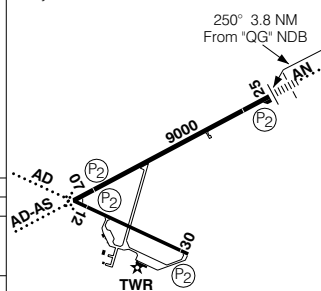
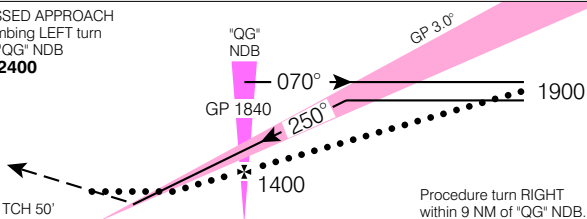
CYQG



SAFE ALT 100 NM **3100**

MISSED APPROACH
Climbing LEFT turn to "QG" NDB at **2400**

ARCAL 124.7(K) (see CFS)
Rwy 12-30 5150 x 150



CATEGORY	A	B	C	D
ILS	808	(200)	1/2 RVR 26	
LOC	940	(332)	1 RVR 50	
NDB	1000	(392)	1	
CIRCLING	1140 (518)	1 1/2	1140 (518)	1240 (618)
			2	2

"QG" NDB to MAP 3.8 NM					
Knots	70	90	110	130	150
Min:Sec	3:15	2:32	2:04	1:45	1:31

ILS or NDB RWY 25

N42 16 32 W82 57 20

VAR 7° W

WINDSOR ON
WINDSOR

EFF 13 APR 06

CHANGE: ARR/DEP frequency added

NAD83