

STAR
HADAR TWO ARR (HADAR, HADAR 2))

WINDSOR ON
WINDSOR

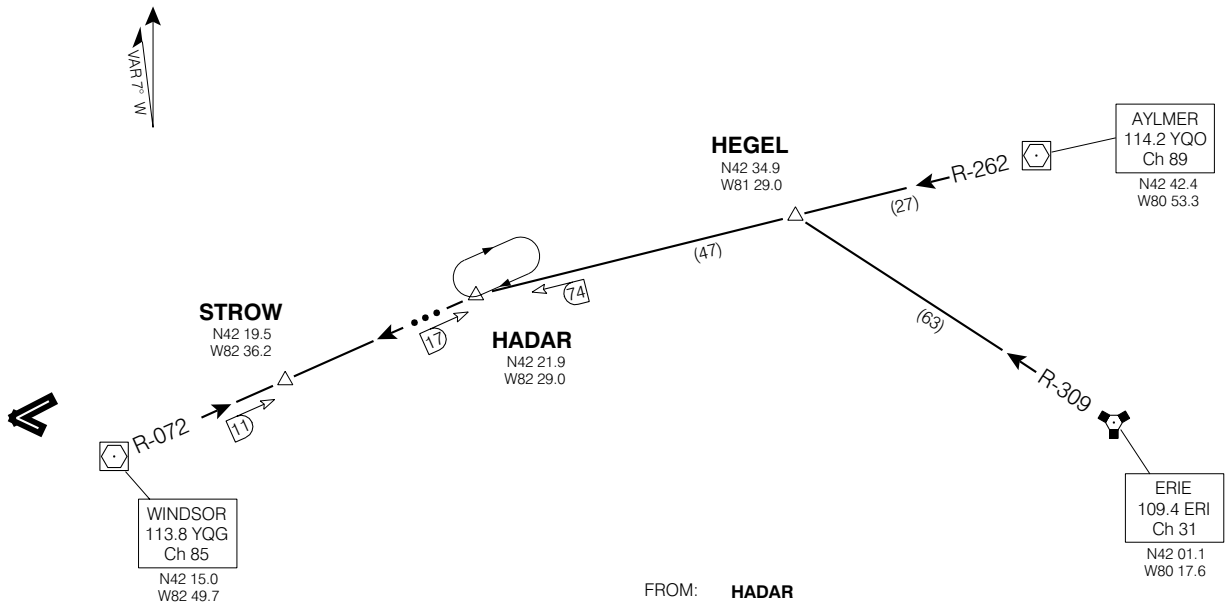
ALL RUNWAYS
.... From **HADAR INTXN**
via **YQG R-072**. Expect
RADAR VECTORS to
final approach course.

**MAINTAIN ASSIGNED ALTITUDE
UNTIL CLEARED FOR APPROACH**

... → **EXPECT RADAR VECTORS
TO FINAL APPROACH COURSE**

DME REQUIRED

- **ATIS 134.5**
ARR DETROIT APCH CTL
126.85 127.5 134.3 363.2 348.3
- **TWR 124.7 236.6**
O/T TFC 124.7 (MF 6 NM)
- **GND 121.7**



FROM:	HADAR
APRX DIST TO:	RWY 07 51 NM
	RWY 25 21 NM
	RWY 30 23 NM

Chart not to scale

HADAR TWO ARR (HADAR, HADAR 2)
EFF 13 APR 06 CHANGE: ARR frequency added

WINDSOR ON
WINDSOR
NAD83