

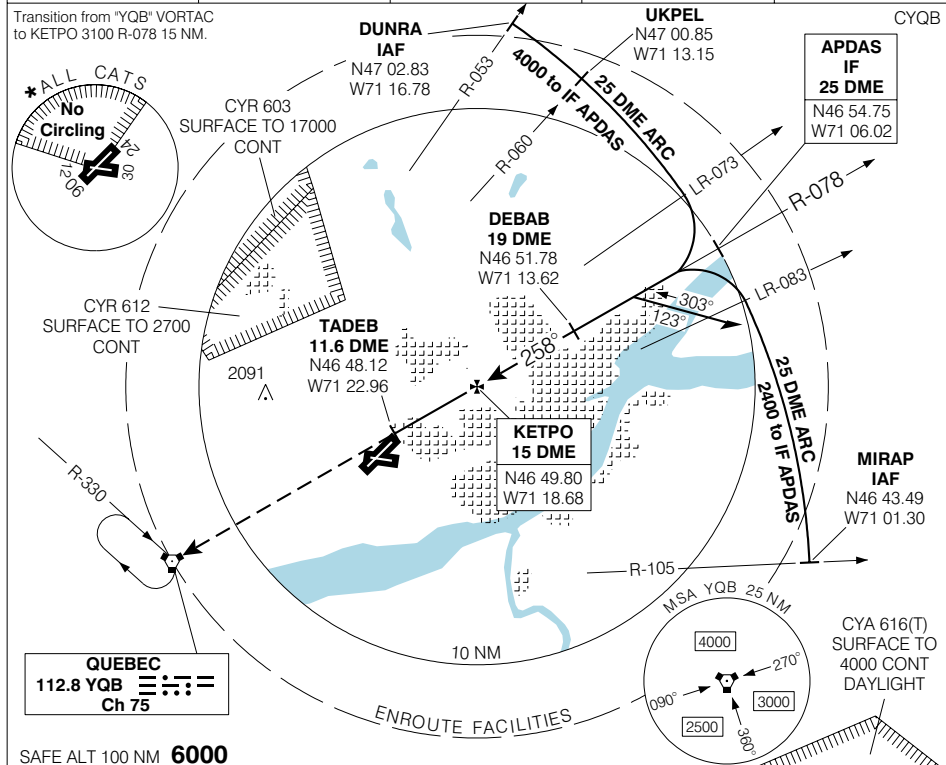


VOR/DME RWY 24

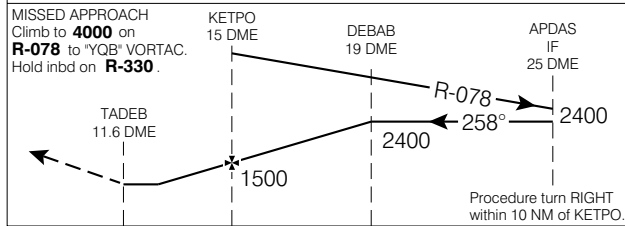
Geomatics Canada

<b>ATIS</b> 134.6 (Eng) 128.3 (Fr)	<b>ARR/DEP</b> 124.0 127.85 322.8	<b>TWR</b> 118.65 236.6	<b>GND</b> 121.9 250.0	<b>ELEV 244</b> <b>TDZE 24 236</b>
--	---	-------------------------------	------------------------------	---------------------------------------

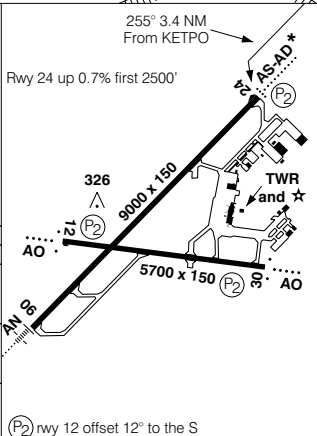
Transition from "YQB" VORTAC to KETPO 3100 R-078 15 NM.



SAFE ALT 100 NM **6000**



CATEGORY	A	B	C	D
VOR/DME	<b>820</b>	(584)	1 ¾	
* CIRCLING	<b>820</b>	(576) 1 ¾	<b>820</b>	<b>860</b>
			(576) 2	(616) 2



Knots	70	90	110	130	150
Min:Sec					

VOR/DME RWY 24

N46 47 28 W71 23 36

VAR 17° W

QUÉBEC QC

EFF 16 FEB 06

CHANGE: ARR/DEP

QUÉBEC/JEAN LESAGE INTL

NAD83