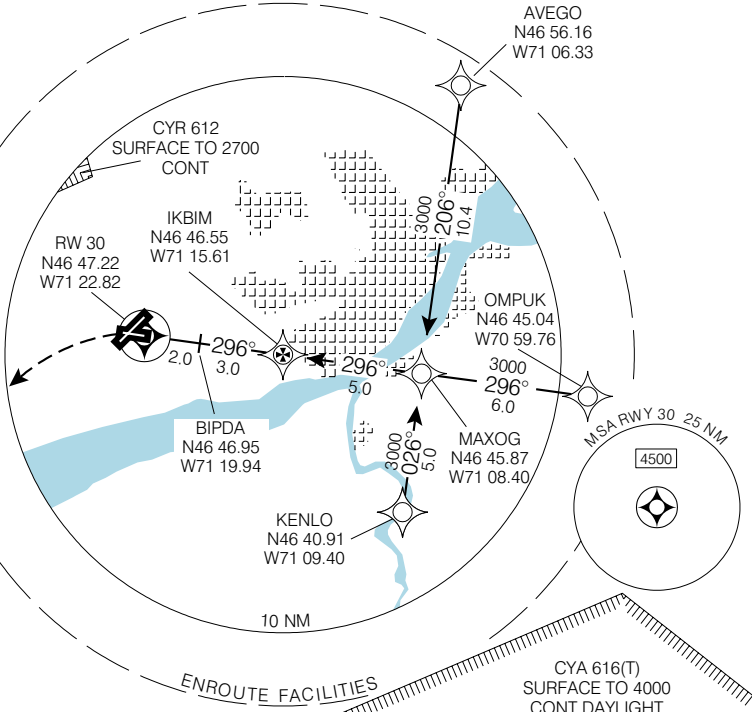


RNAV (GNSS) RWY 30

QUÉBEC/JEAN LESAGE INTL
QUÉBEC QC

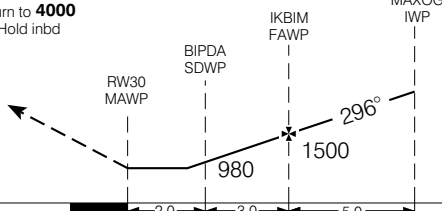
ATIS 134.6 (Eng) 128.3 (Fr)	ARR/DEP 124.0 127.85 322.8	TWR 118.65 236.6	GND 121.9 250.0	ELEV 244 TDZE 30 233
--	---	-------------------------------	------------------------------	---------------------------------------

CYQB

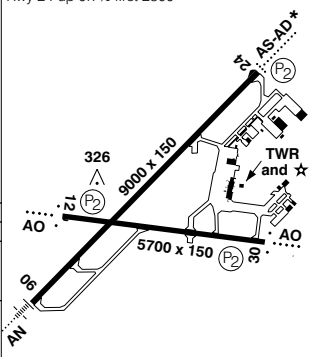


SAFE ALT 100 NM **6000**

MISSED APPROACH
LEFT climbing turn to **4000**
LEFT climbing turn to "YQB" VOR. Hold inbound on **R-330**.



Rwy 24 up 0.7% first 2500'



CATEGORY	A	B	C	D
LNAV / VNAV	NOT AUTHORIZED			
LNAV	600	(367)	1 ¼	
* CIRCLING	760	(516) 1 ½	760	860
			(516) 2	(616) 2

(P2) rwy 12 offset 12' to the S

Knots	70	90	110	130	150
Min:Sec					

RNAV (GNSS) RWY 30

N46 47 28 W71 23 36

VAR 18° W
(2003)

QUÉBEC QC

QUÉBEC/JEAN LESAGE INTL

NAD83

EFF 13 APR 06

CHANGE: GPS to GNSS