

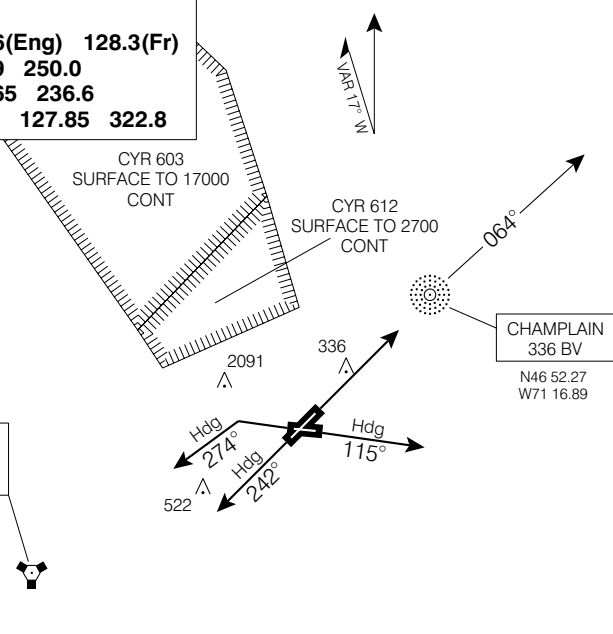
SID(VECTOR)

**QUEBEC TWO DEP (CYQB 2.)**



QUÉBEC/JEAN LESAGE INTL  
QUÉBEC QC

**VOT 115.7**  
**ATIS 134.6(Eng) 128.3(Fr)**  
**GND 121.9 250.0**  
**TWR 118.65 236.6**  
**DEP 124.0 127.85 322.8**



QUEBEC  
112.8 YQB  
Ch 75  
N46 42.32  
W71 37.59

DEPARTURE CLIMB RATE V/V (FPM)

GROUND SPEED	90	120	140	160	180	200	250	300
290 FT/NM	440	580	680	780	870	970	1210	1450

Chart not to scale

**DEPARTURE ROUTE DESCRIPTION**

- Rwy 06:**
- Climb to "BV" NDB then track 064° outbound or on assigned heading by ATC for radar vectors.
  - All acft maintain 4000 ASL or as assigned.
- Rwy 12 :**
- Climb on heading 115° or as assigned by ATC for radar vectors.
  - Jet acft maintain 4000 ASL or as assigned. Non-jet acft maintain 3000 ASL or as assigned.
- Do not proceed in north sector between Rwys 06 and 30 before reaching 1600.
- Rwy 24 :**
- Climb on heading 242° or as assigned by ATC for radar vectors.
  - Jet acft maintain 4000 ASL or as assigned. Non-jet acft maintain 3000 ASL or as assigned.
- Do not proceed in north sector between Rwys 06 and 30 before reaching 1600.
- Rwy 30:**
- Requires a minimum climb gradient of 290 ft/NM to 1600.
  - Maintain hdg 295° until 660 then climbing left turn hdg 274° or as assigned by ATC for radar vectors.
  - Jet acft maintain 4000 ASL or as assigned. Non-jet acft maintain 3000 ASL or as assigned.

**COMMUNICATION FAILURE**

- Select transponder mode C/3 code 7600.
- Climb to flight planned altitude 3 minutes after take-off, and
- Proceed on course 3 minutes after selecting 7600.

**QUEBEC TWO DEP (CYQB 2.)**

EFF 16 FEB 06

CHANGE: DEP

QUÉBEC QC  
QUÉBEC/JEAN LESAGE INTL

NAD83