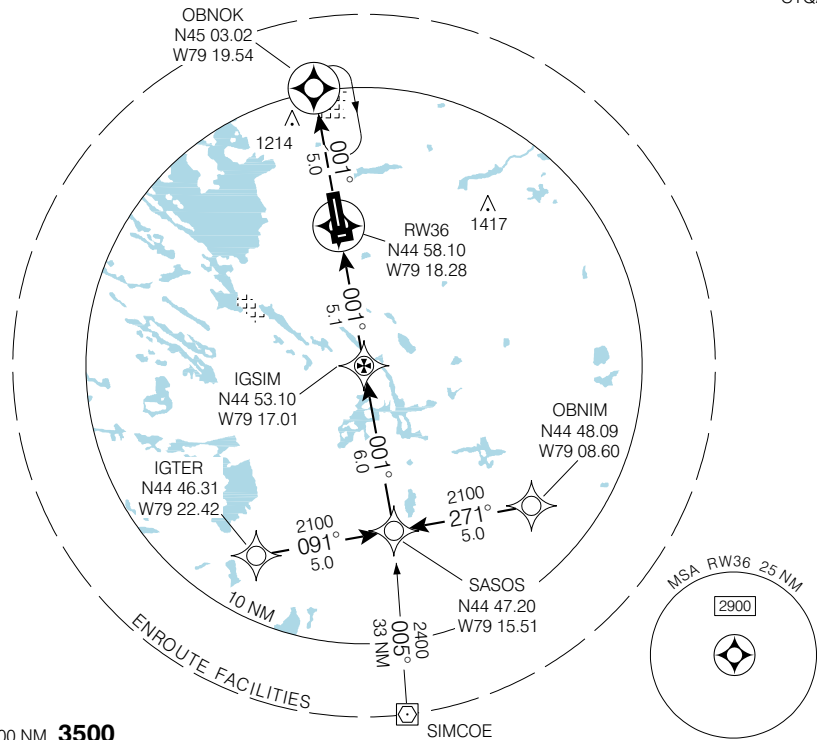


RNAV (GNSS) RWY 36

MUSKOKA
MUSKOKA ON

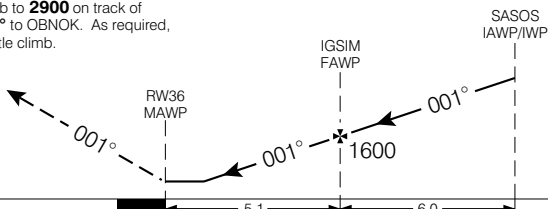
ARR/DEP TIMMINS RADIO 122.3	RADIO TIMMINS 122.3 (MF 5 NM)	ELEV 925
		TDZE 36 918

CYQA

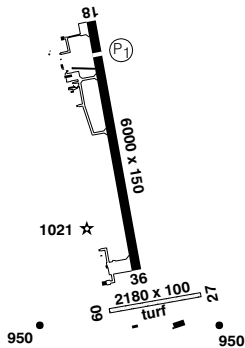


SAFE ALT 100 NM **3500**

MISSED APPROACH
Climb to **2900** on track of **001°** to OBNOK. As required, shuttle climb.



ARCAL 122.3 (K)



CATEGORY	A				B		C		D	
LNAV / VNAV	NOT AUTHORIZED									
LNAV	1420		(502)		1 ½					
CIRCLING	1440		(515)		1 ½		1440		1540	
							(515)		2 (615) 2	

Knots	70	90	110	130	150
Min:Sec					

RNAV (GNSS) RWY 36

N44 58 29 W79 18 12

VAR 11° W (2005)

MUSKOKA ON
MUSKOKA
NAD83

EFF 13 APR 06

CHANGE: GPS to GNSS; comm box