

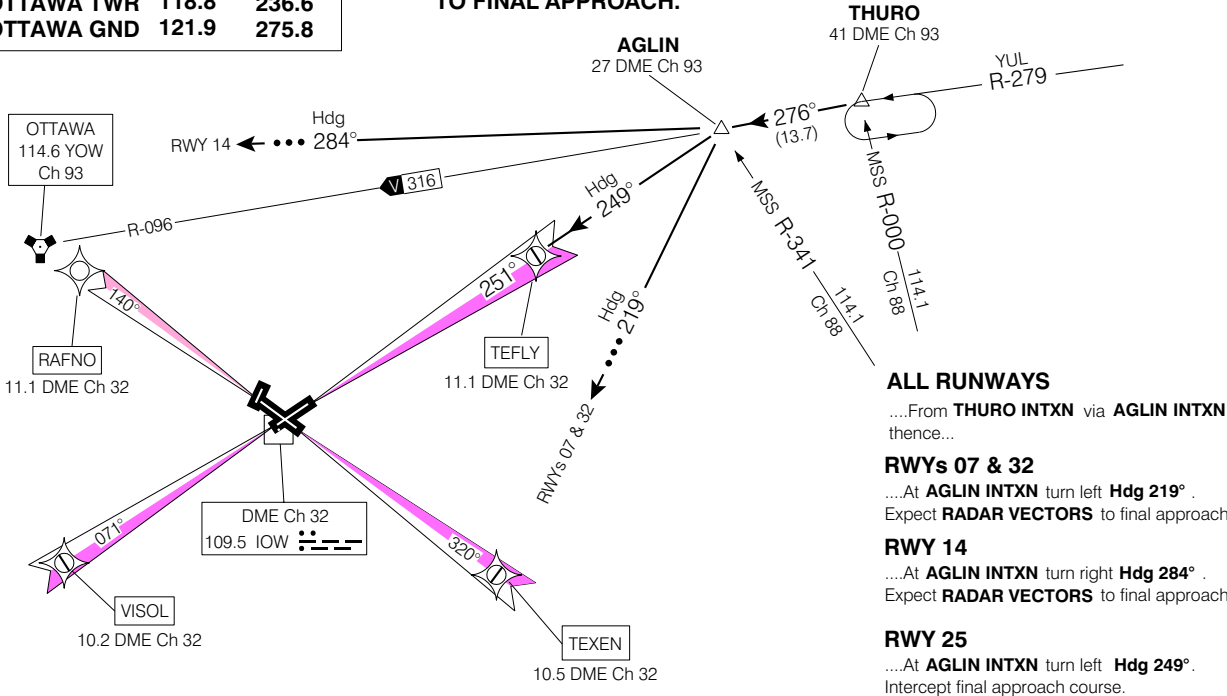
STAR  
THURO EIGHT ARR (THURO, THURO 8)

OTTAWA/MACDONALD-CARTIER INTL  
OTTAWA ON



**MAINTAIN ASSIGNED ALTITUDE  
UNTIL CLEARED FOR APPROACH**  
•••→ EXPECT RADAR VECTORS  
TO FINAL APPROACH.

ATIS (ENG)	121.15	265.6
(FR)	132.95	382.05
OTTAWA ARR	135.15	247.0
OTTAWA TWR	118.8	236.6
OTTAWA GND	121.9	275.8



**ALL RUNWAYS**

....From **THURO INTXN** via **AGLIN INTXN** thence...

**RWYs 07 & 32**

....At **AGLIN INTXN** turn left **Hdg 219°** .  
Expect **RADAR VECTORS** to final approach course.

**RWY 14**

....At **AGLIN INTXN** turn right **Hdg 284°** .  
Expect **RADAR VECTORS** to final approach course.

**RWY 25**

....At **AGLIN INTXN** turn left **Hdg 249°** .  
Intercept final approach course.

FROM:	<b>THURO</b>	
APRX DIST TO:	<b>RWY 07</b>	62 NM
	<b>RWY 14</b>	58 NM
	<b>RWY 25</b>	34 NM
	<b>RWY 32</b>	52 NM

Chart not to scale

THURO EIGHT ARR (THURO, THURO 8)

OTTAWA/MACDONALD-CARTIER INTL  
OTTAWA ON

EFF 16 FEB 06

CHANGE: Comm box

OTAWA ON  
NAD83