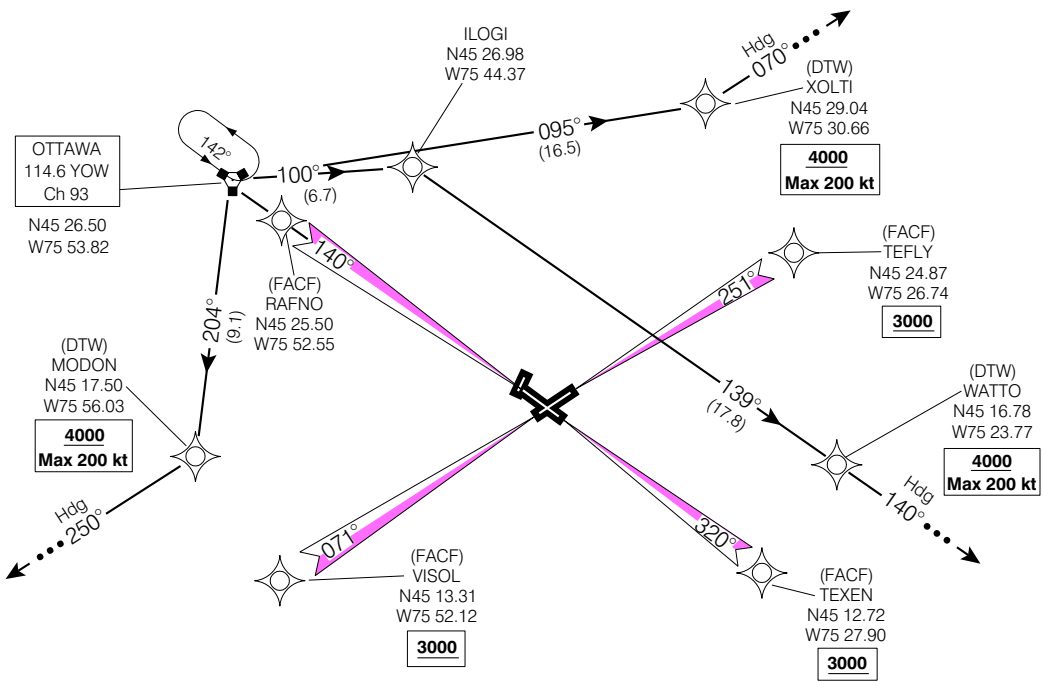


STAR (RNAV)

MEECH FOUR ARR (YOW.MEECH 4)

OTTAWAMACDONALD-CARTIER INTL
OTTAWA ON



ALL ALTITUDES WILL BE ISSUED BY ATC

If RNAV STAR includes a DTW, the following procedures apply.

If approach clearance is NOT RECEIVED prior to DTW

- Fly depicted heading $\dots \rightarrow$
- Expect radar vectors to final

If approach clearance RECEIVED prior to DTW

- Fly **RNAV STAR** via **DTW**, then
- Via **FACF**, then
- Fly the **STRAIGHT-IN** approach

ATIS (ENG)	121.15	265.6
(FR)	132.95	382.05
OTTAWA ARR	135.15	247.0
OTTAWA TWR	118.8	236.6
OTTAWA GND	121.9	275.8

Chart not to scale

MEECH FOUR ARR (YOW.MEECH 4)

EFF 16 FEB 06

CHANGE: Comm box

VAR 14° W (1996)
OTTAWAMACDONALD-CARTIER INTL
OTTAWA ON

NAD83