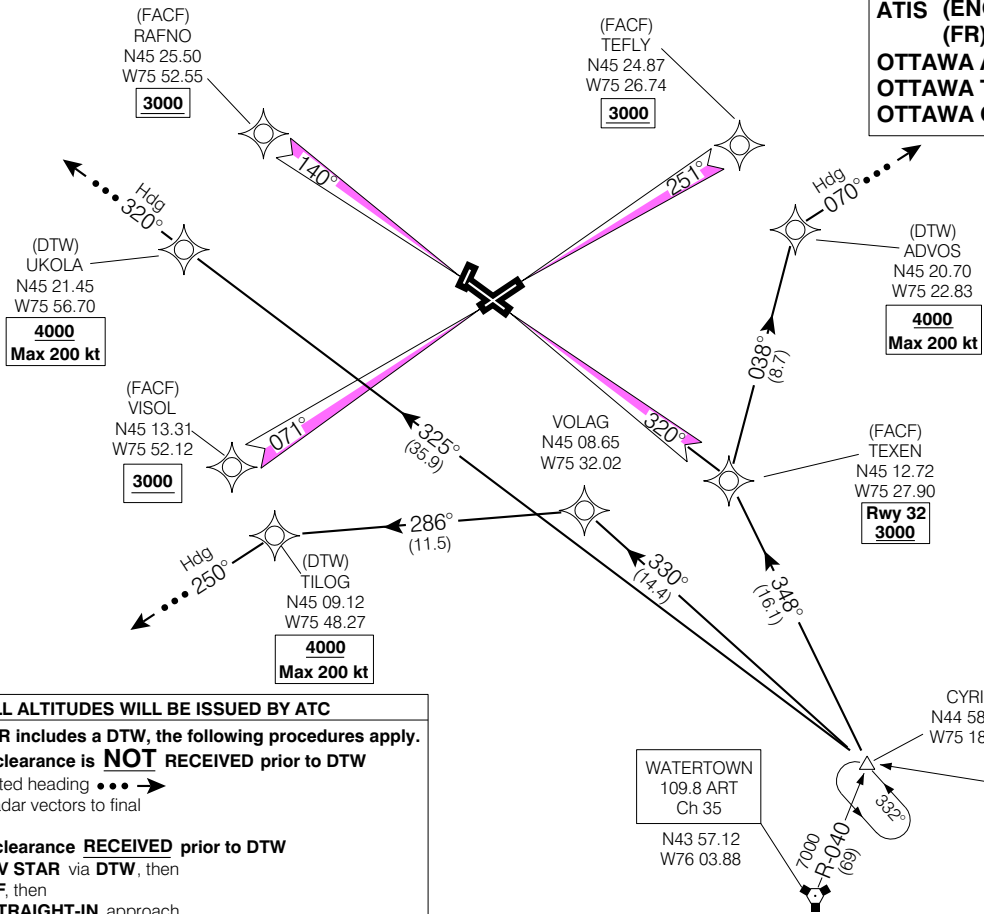


STAR (RNAV)  
DEANS TWO ARR (CYRIL, DEANS 2)

OTTAWAMACDONALD-CARTIER INTL  
OTTAWA ON

ATIS (ENG)	121.15	265.6
(FR)	132.95	382.05
OTTAWA ARR	135.15	247.0
OTTAWA TWR	118.8	236.6
OTTAWA GND	121.9	275.8



**ALL ALTITUDES WILL BE ISSUED BY ATC**

If RNAV STAR includes a DTW, the following procedures apply.

If approach clearance is **NOT** RECEIVED prior to DTW

- Fly depicted heading  $\cdots \rightarrow$
- Expect radar vectors to final

If approach clearance **RECEIVED** prior to DTW

- Fly RNAV STAR via DTW, then
- Via FACF, then
- Fly the STRAIGHT-IN approach

Chart not to scale

DEANS TWO ARR (CYRIL, DEANS 2)

EFF 16 FEB 06

CHANGE: Comm box

VAR 14° W (1996)

OTTAWAMACDONALD-CARTIER INTL  
OTTAWA ON  
NAD83