

STAR (RNAV)
CAPITAL SIX ARR

(LANRK CAPTL 6)

OTTAWAMACDONALD-CARTIER INTL
OTTAWA ON

ALL ALTITUDES WILL BE ISSUED BY ATC

If RNAV STAR includes a DTW, the following procedures apply.
If approach clearance is NOT RECEIVED prior to DTW

- Fly depicted heading $\dots \rightarrow$
- Expect radar vectors to final

If approach clearance RECEIVED prior to DTW

- Fly **RNAV STAR** via DTW, then
- Via **FACF**, then
- Fly the **STRAIGHT-IN** approach

ATIS (ENG)	121.15	265.6
(FR)	132.95	382.05
OTTAWA ARR	135.15	247.0
OTTAWA TWR	118.8	236.6
OTTAWA GND	121.9	275.8

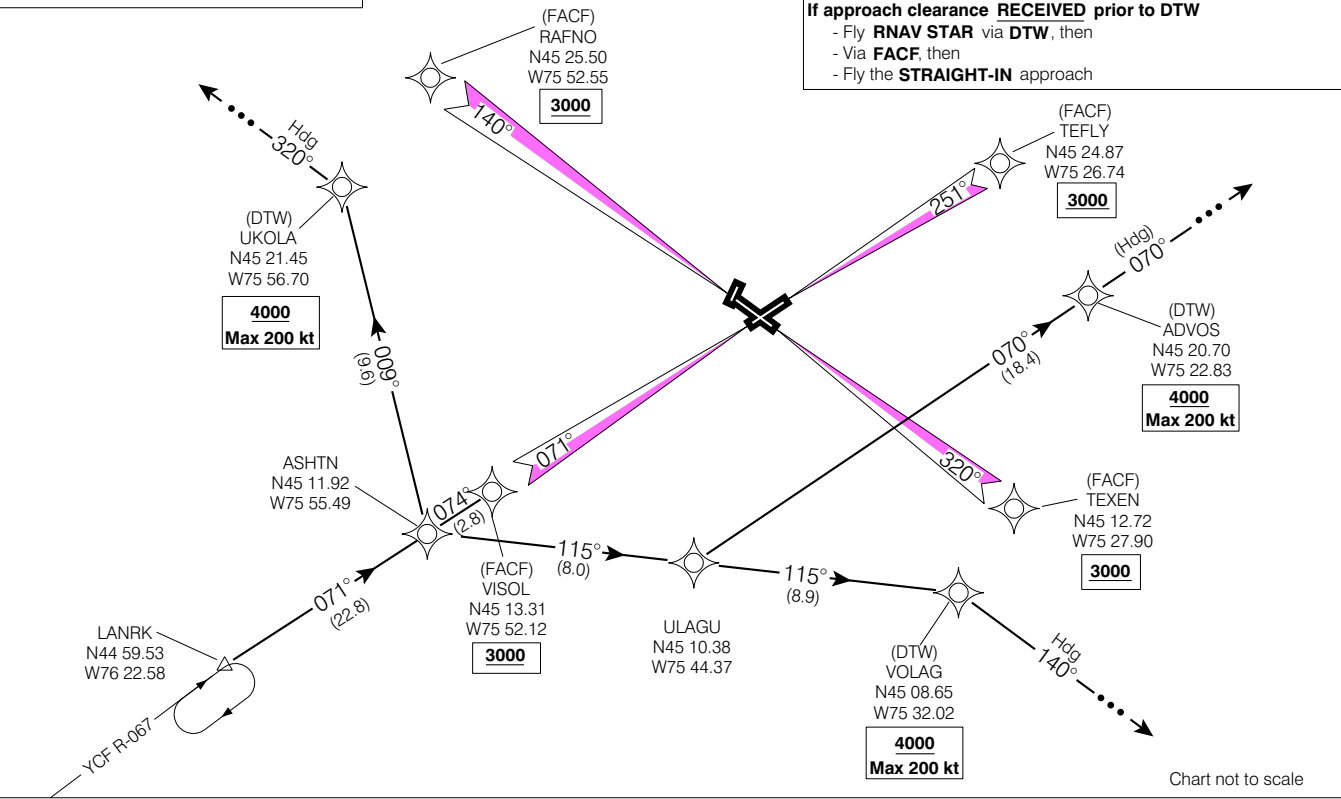


Chart not to scale

CAPITAL SIX ARR (LANRK CAPTL 6)

OTTAWA ON
OTTAWAMACDONALD-CARTIER INTL
VAR 14° W (1996)

EFF 16 FEB 06

CHANGE: Comm box