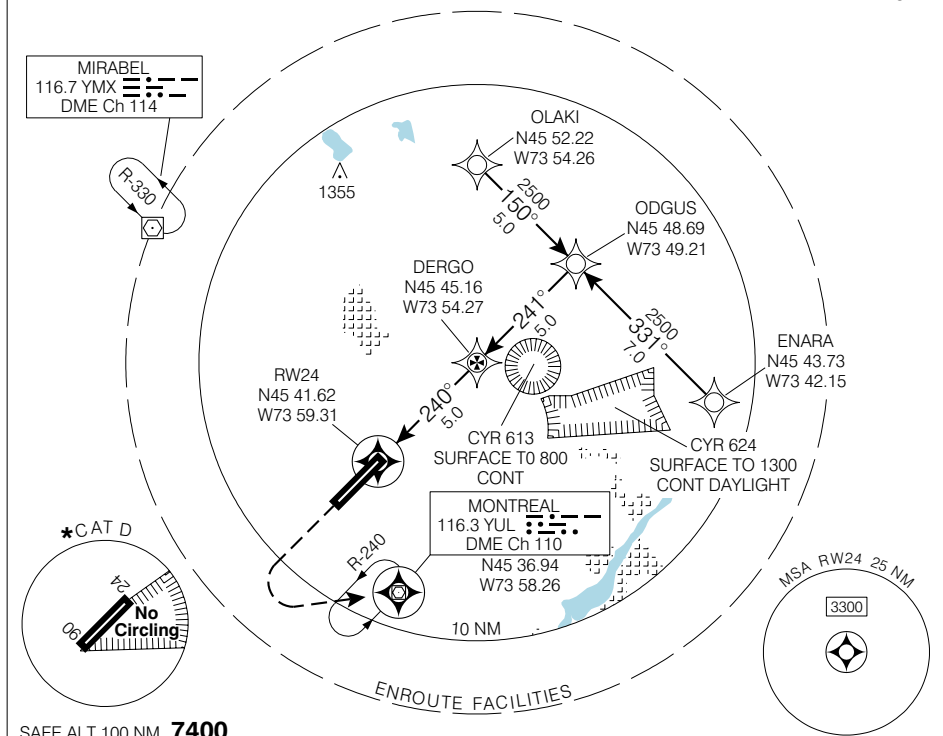


RNAV (GNSS) RWY 24

MONTRÉAL INTL (MIRABEL)
MONTRÉAL QC

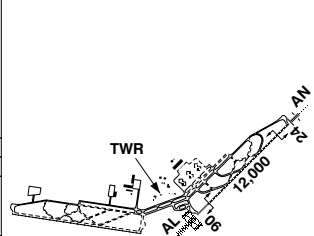
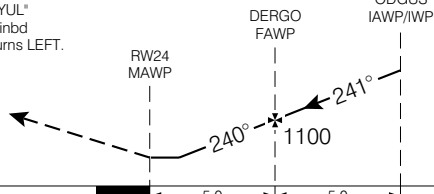
ATIS 125.7 (Eng) 126.1 (Fr)	ARR 124.65 268.3	TWR 119.1 282.4	GND 121.8 246.6	DEP 124.65 268.3	ELEV 270 TDZE 24 239
--	-------------------------------	------------------------------	------------------------------	-------------------------------	---------------------------------------

CYMX



MISSED APPROACH
Climb to **3000** on HDG **240°**
LEFT turn direct "YUL"
VOR/DME. Hold inbd on **R-240**. All turns LEFT.

TDZL Rwy 06
Rwy 24 up to 0.3% between B5 and B6



CATEGORY	A	B	C	D
LNAV / VNAV	NOT AUTHORIZED			
LNAV	640	(401)	1 RVR 50	
* CIRCLING	800	(530) 1 ¾	800	880
			(530) 2	(610) 2

Knots	70	90	110	130	150
Min:Sec					

RNAV (GNSS) RWY 24

N45 40 47 W74 02 19

VAR 15° W (2003)

MONTRÉAL QC

EFF 13 APR 06

CHANGE: GPS to GNSS; DEP freq

MONTRÉAL INTL (MIRABEL)

NAD83

© 2006 Her Majesty The Queen in Right of Canada, Department of Natural Resources. All rights reserved. Source of Canadian Civil Aeronautical Data: © 2006 NAV CANADA. All rights reserved.