

STAR  
NAPEE SIX ARR (NAPEE, NAPEE. 6)



MONTREAL INTL (MIRABEL)  
MONTREAL OC

**RWY 06**

.... From **PLB** via **PLB R-003** to **NAPEE**.  
**LEFT** turn to intercept **YMX R-160** inbd track to **SEVTU**. Then **LEFT** turn **HDG 275°**. Expect **RADAR VECTORS** to final approach course.

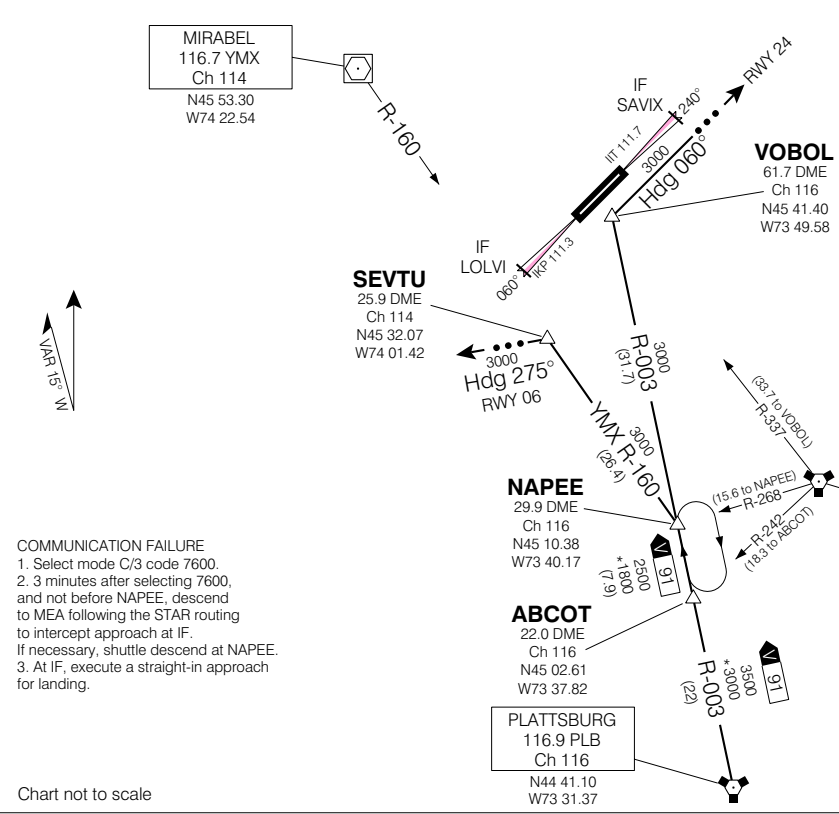
**RWY 24**

.... From **PLB** via **PLB R-003** to **VOBOL**. Then **RIGHT** turn on **HDG 060°**. Expect **RADAR VECTORS** to final approach course.

**MAINTAIN ASSIGNED ALTITUDE UNTIL CLEARED FOR APPROACH**

... → **EXPECT RADAR VECTORS TO FINAL APPROACH**

MIRABEL ATIS 125.7 (Eng) 126.1 (Fr)  
MONTREAL ARR 124.65 268.3  
MIRABEL TWR 119.1 282.4  
MIRABEL GND 121.8 246.6



COMMUNICATION FAILURE  
1. Select mode C/3 code 7600.  
2. 3 minutes after selecting 7600, and not before NAPEE, descend to MEA following the STAR routing to intercept approach at IF.  
If necessary, shuttle descend at NAPEE.  
3. At IF, execute a straight-in approach for landing.

Chart not to scale

NAPEE SIX ARR (NAPEE, NAPEE. 6)

MONTREAL OC  
MONTREAL INTL (MIRABEL)  
MAD93

NOT FOR  
NAVIGATION

EFF 16 FEB 06

CHANGE: ARR