



RWY 06

... From **CATOG** via **YUL R-084** to **VEPSU**. **RIGHT** turn direct **ZMX NDB**. Then **LEFT** turn direct **ZMM NDB**. **LEFT** turn on **ZMM NDB** odb track **235°**. Expect **RADAR VECTORS** to final approach course. Do not expect lower than **6000'** until west of **CYMX**.

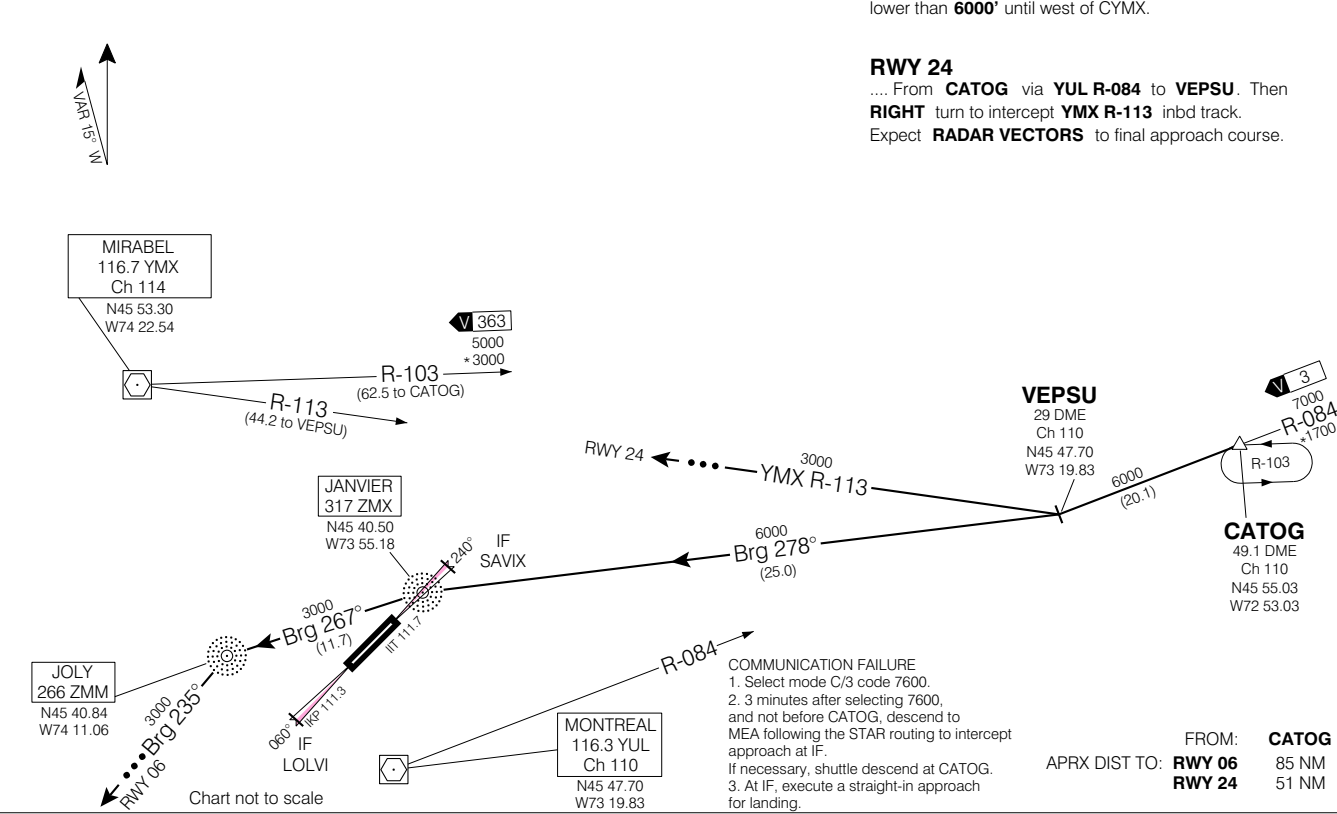
RWY 24

... From **CATOG** via **YUL R-084** to **VEPSU**. Then **RIGHT** turn to intercept **YMX R-113** inbd track. Expect **RADAR VECTORS** to final approach course.

MIRABEL ATIS	125.7 (Eng)	126.1 (Fr)
MONTREAL ARR	124.65	268.3
MIRABEL TWR	119.1	282.4
MIRABEL GND	121.8	246.6

**MAINTAIN ASSIGNED ALTITUDE
UNTIL CLEARED FOR APPROACH**

... ➔ **EXPECT RADAR VECTORS
TO FINAL APPROACH**



COMMUNICATION FAILURE
 1. Select mode C/3 code 7600.
 2. 3 minutes after selecting 7600, and not before CATOG, descend to MEA following the STAR routing to intercept approach at IF.
 If necessary, shuttle descend at CATOG.
 3. At IF, execute a straight-in approach for landing.

FROM:	CATOG
RWY 06	85 NM
RWY 24	51 NM