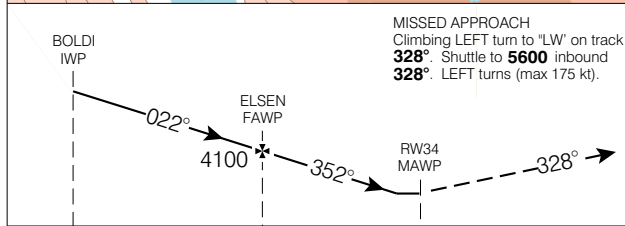
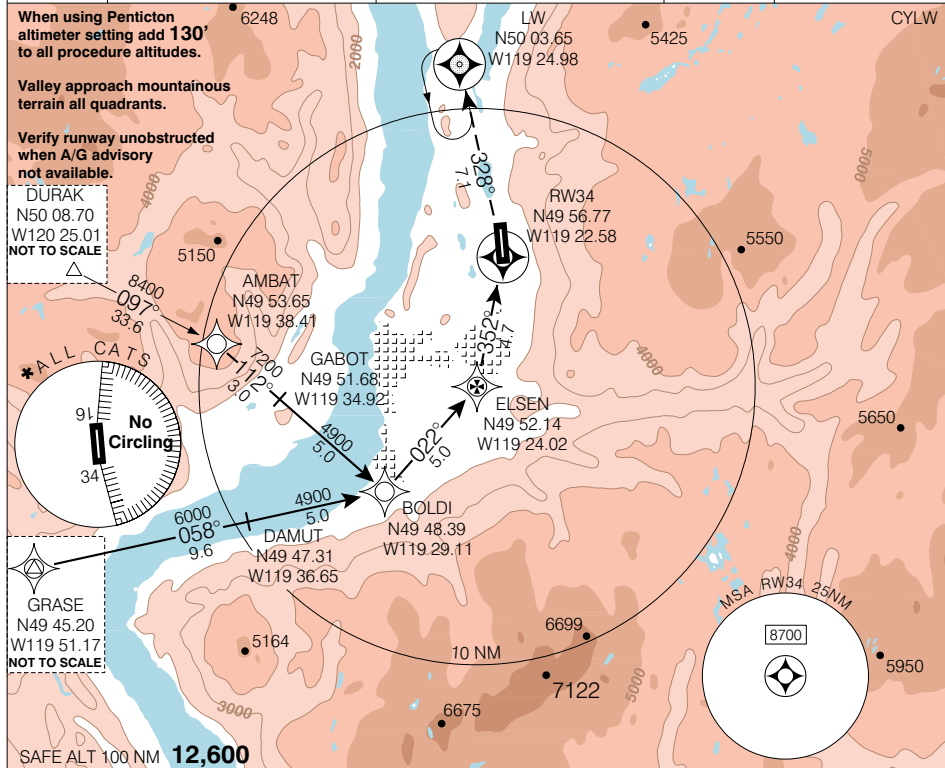


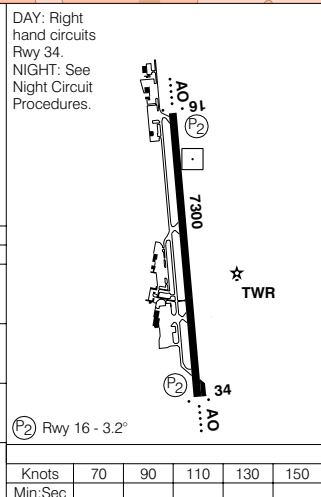
RNAV(GNSS) A

KELOWNA
KELOWNA BC

<p>ATIS 127.5</p>	<p>ARR/DEP VANCOUVER CENTRE 133.5 294.0</p>	<p>TWR 119.6 292.2 O/T PENTICTON RADIO 119.6 (MF 5 NM)</p>	<p>GND 121.7</p>	<p>ELEV 1409</p>
-----------------------	---	--	----------------------	------------------



<p>MISSED APPROACH Climbing LEFT turn to "LW" on track 328°. Shuttle to 5600 inbound 328°. LEFT turns (max 175 kt).</p>	<p>DAY: Right hand circuits Rwy 34. NIGHT: See Night Circuit Procedures.</p>
<p>BOLDI IWP</p>	<p>ELSEN FAWP</p>
<p>4100</p>	<p>352°</p>
<p>5.0</p>	<p>4.7</p>
<p>RW34 MAWP</p>	<p>328°</p>
<p>CATEGORY</p>	<p>A B C D</p>
<p>* CIRCLING</p>	<p>3560 (2151) 3</p>
<p>Min:Sec</p>	<p>70 90 110 130 150</p>



RNAV(GNSS) A N49 57 22 W119 22 40 VAR 19° E (2001) KELOWNA BC KELOWNA NAD83