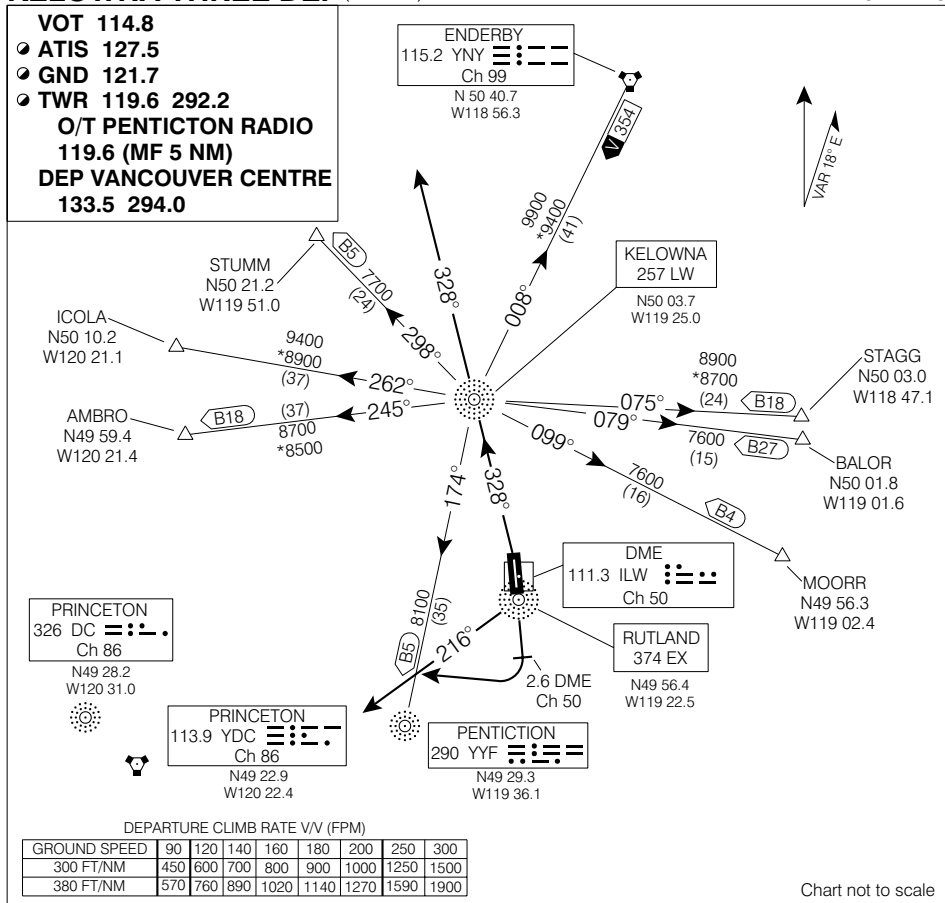


SID (VECTOR)

**KELOWNA THREE DEP (YLW 3.)**

KELOWNA  
KELOWNA BC



**DEPARTURE ROUTE DESCRIPTION**

**Runway 16:** - ½ - Requires a minimum climb gradient of 300 ft/NM to 4600. Climb runway heading to 2.6 DME (Ch 50) at 2000 or above. RIGHT climbing turn to intercept track 216° from "EX" NDB. Climb to 9000 or as assigned. Contact Vancouver Centre after passing 4000. Expect radar vectors to filed/assigned route or depicted fix and clearance to flight planned altitude/flight level 5 minutes after departure.

**Runway 34:** - ½ - Requires a minimum climb gradient of 380 ft/NM to 4300. Climb on track 328° via "LW" NDB to 9000 or as assigned. Contact Vancouver Centre after passing 4000. Expect radar vectors to filed/assigned route and clearance to flight planned altitude/flight level 5 minutes after departure.

**Note:** Aircraft unable to meet the required climb gradient should refer to Kelowna Departure Procedure.

**KELOWNA THREE DEP (YLW 3.)**

EFF 13 APR 06 CHANGE: Editorial

KELOWNA BC  
KELOWNA  
NAD83