

KELOWNA
KELOWNA BC

DEPARTURE PROCEDURE

VOT 114.8
 ● **ATIS 127.5**
 ● **GND 121.7**
 ● **TWR 119.6 292.2**
O/T PENTICTON RADIO
119.6 (MF 5 NM)
DEP VANCOUVER CENTRE
133.5 294.0

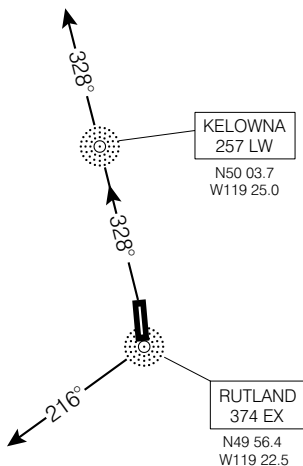


Chart not to scale.

DEPARTURE ROUTE DESCRIPTION

Rutland Route: SPEC VIS - Climb visual west of airport so as to cross "EX" NDB at 3400 or above. Continue climb on track 216° from "EX" NDB to 9000 BPOC.

Winfield Route: SPEC VIS - Climb visual west of airport to 3200 then climb on track 328° via "LW" NDB to 9000 BPOC.

© 2006 Her Majesty The Queen in Right of Canada, Department of Natural Resources. All rights reserved

Source of Canadian Civil Aeronautical Data: © 2006 NAV CANADA. All rights reserved

DEPARTURE PROCEDURE

CHANGE: Editorial

KELOWNA BC
KELOWNA
NAD83