

# LOC(BC) RWY 32

HALIFAX INTL  
HALIFAX NS

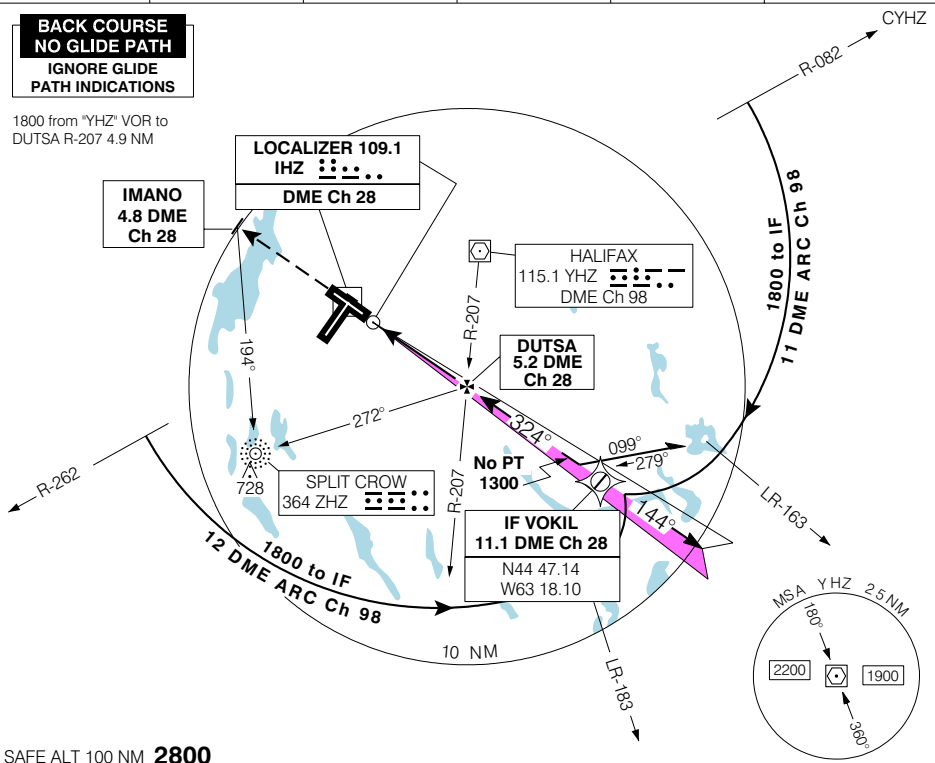
<b>ATIS</b> 121.0 229.1	<b>ARR</b> 119.2 225.2	<b>TWR</b> 118.4 236.6	<b>GND</b> 121.9 275.8	<b>DEP</b> 119.2 225.2	<b>ELEV 477</b> <b>TDZE 32 477</b>
-------------------------------	------------------------------	------------------------------	------------------------------	------------------------------	---------------------------------------

© 2006 Her Majesty The Queen in Right of Canada, Department of Natural Resources. All rights reserved

Source of Canadian Civil Aeronautical Data: © 2006 NAV CANADA. All rights reserved

**BACK COURSE  
NO GLIDE PATH  
IGNORE GLIDE  
PATH INDICATIONS**

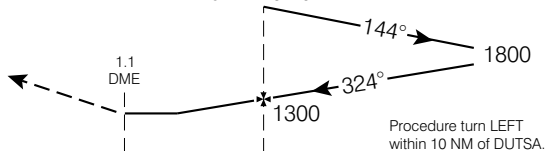
1800 from "YHZ" VOR to  
DUTSA R-207 4.9 NM



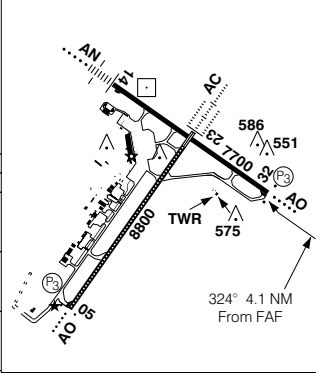
SAFE ALT 100 NM **2800**

**MISSED APPROACH**  
Climb to **2200** on track  
of **324°** to IMANO.

DUTSA  
R-207 "YHZ" VOR  
272° brgt to "ZH" NDB  
5.2 DME Ch 28



TDZL Rwy 23  
Rwy 32 down 0.55%



CATEGORY	A	B	C	D
LOC(BC)/NDB	<b>740</b>		(263)	1
LOC(BC)/VOR	<b>740</b>		(263)	1
LOC(BC)/DME	<b>740</b>		(263)	1
CIRCLING	<b>980</b> (503)	1 ½	<b>980</b> (503) 2	<b>1080</b> (603) 2

FAF to MAP 4.1 NM				
Knots	70	90	110	130 150
Min:Sec	<b>3:31</b>	<b>2:44</b>	<b>2:14</b>	<b>1:54 1:38</b>

# LOC(BC) RWY 32

N44 52 51 W63 30 31 VAR 19° W

HALIFAX NS  
HALIFAX INTL  
NAD83

EFF 13 APR 06

CHANGE: Editorial