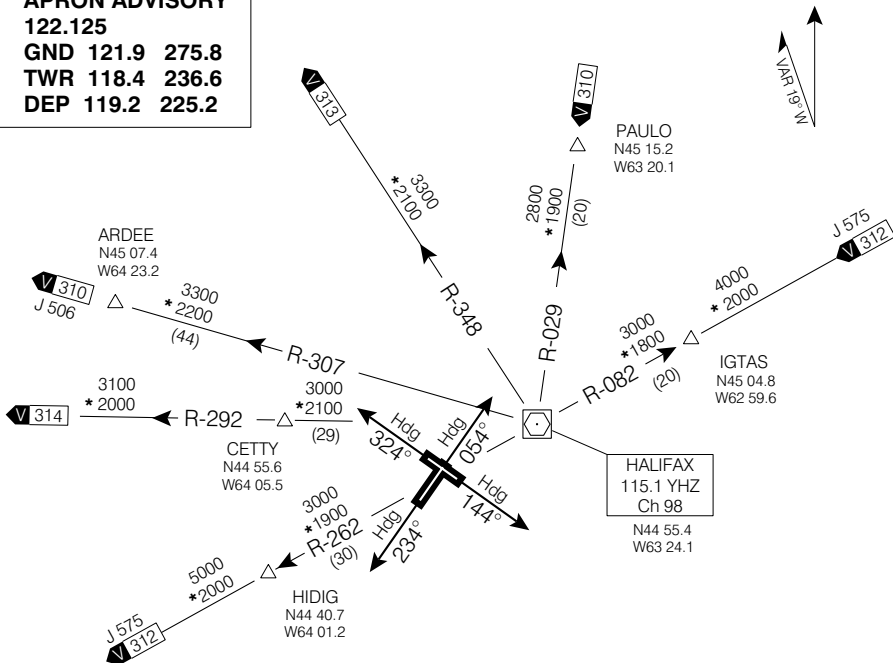


SID(VECTOR)

HALIFAX THREE DEP (CYHZ 3)HALIFAX INTL
HALIFAX NS

VOT 115.7
 ATIS 121.0 229.1
 CLNC DEL 123.95
 APRON ADVISORY
 122.125
 GND 121.9 275.8
 TWR 118.4 236.6
 DEP 119.2 225.2

**CLIMB TO AND
 MAINTAIN 5000' ASL**

**DEPARTURE ROUTE DESCRIPTION**

- ALL RUNWAYS:**
1. Climb runway heading or as assigned for radar vectors.
 2. Maintain 5000 ASL or as assigned.

COMMUNICATION FAILURE - TRANSPONDER MODE A/3 CODE 7600

On recognition of communication failure 10 minutes or less after take-off and in IFR weather conditions proceed as follows:

1. Upon reaching last assigned altitude proceed directly on course;
2. Maintain last assigned altitude for 10 minutes after take-off; then
3. Climb to flight planned altitude.

Note: If communication failure occurs more than 10 minutes after take-off, comply with the appropriate procedure for communication failure enroute.

HALIFAX THREE DEP (CYHZ 3)HALIFAX NS
HALIFAX INTL
NAD83

EFF 13 APR 06

CHANGE: Editorial