

STAR (RNAV)

WOODSTOCK THREE ARR

(YXU: W DSTK 3)

HAMILTON
HAMILTON ON

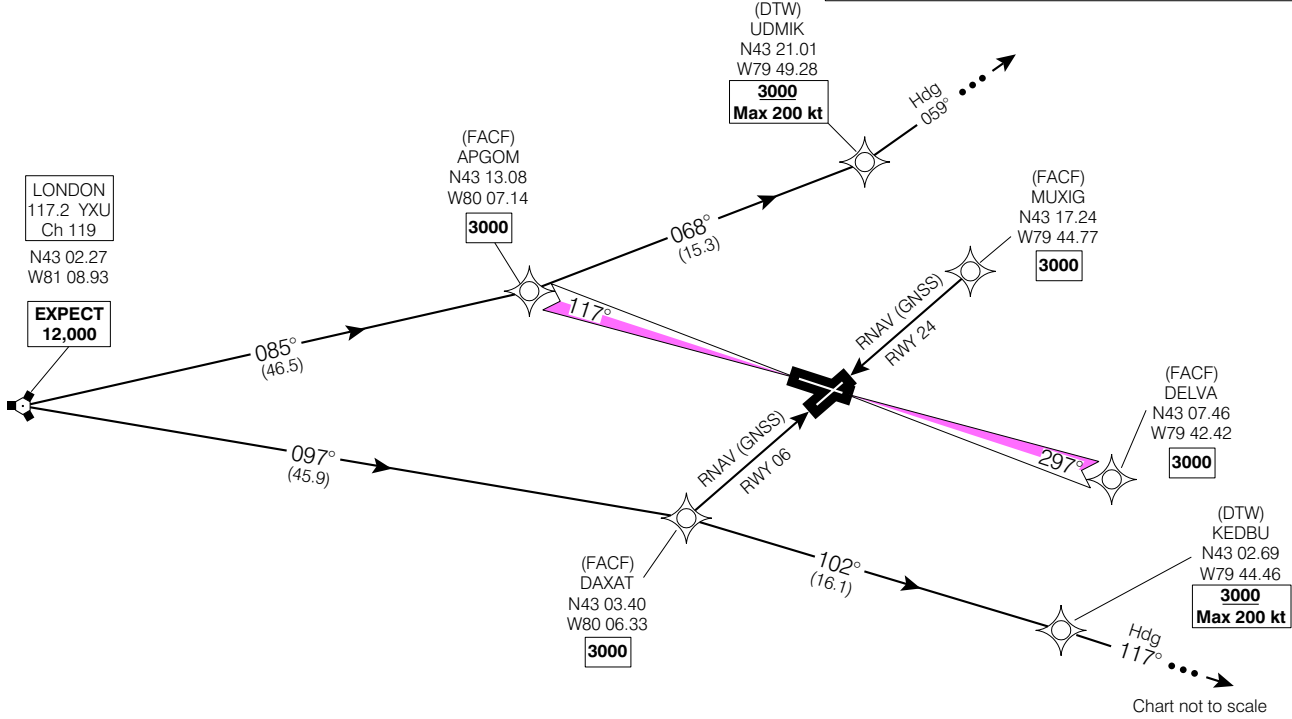
ALL ALTITUDES WILL BE ISSUED BY ATC

If RNAV STAR includes a DTW, the following procedures apply.
If approach clearance is **NOT** RECEIVED prior to DTW

- Fly depicted heading $\dots \rightarrow$
- Expect radar vectors to final

If approach clearance **RECEIVED** prior to DTW

- Fly **RNAV STAR** via DTW, then
- Via **FACF**, then
- Fly the **STRAIGHT-IN** approach



© 2006 Her Majesty The Queen in Right of Canada, Department of Natural Resources All rights reserved

Source of Canadian Civil Aeronautical Data: © 2006 NAV CANADA All rights reserved

ATIS **128.1**
ARR TORONTO TML **128.27 268.75**
HAMILTON TWR **125.0 308.475**

WOODSTOCK THREE ARR

(YXU: W DSTK 3)

HAMILTON ON
HAMILTON

EFF 13 APR 06

CHANGE: GPS to GNSS

VAR 10° W (2003)

NAD83