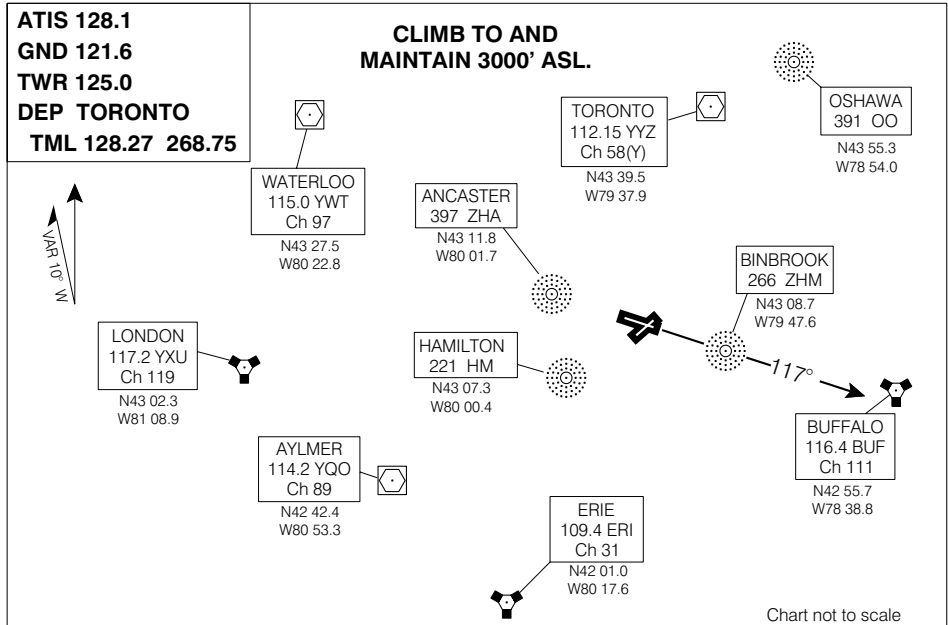


SID (VECTOR)

HAMILTON SEVEN DEP (CYHM 7.)HAMILTON
HAMILTON ON**DEPARTURE ROUTE DESCRIPTION****Runway 12:**

Climb on track of 117° till "ZHM" NDB and 3000' ASL. Expect radar vectors to assigned route or depicted fix.

Runways 06, 24:

Climb on runway hdg to 3000' ASL. Expect radar vectors to filed or assigned route.

NOTE: Noise abatement procedures in effect.

COMMUNICATION FAILURE

On recognition of communication failure 5 minutes or less after take-off and in IFR weather conditions, proceed as follows;

1. transpond Mode A/3 Code 7600;
2. proceed directly on course;
3. maintain last assigned altitude for 5 minutes after recognition of failure;
4. climb to flight plan altitude.

HAMILTON SEVEN DEP (CYHM 7.)

EFF 16 FEB 06

CHANGE: Rwy 12 track

HAMILTON ON
HAMILTON
NAD83