

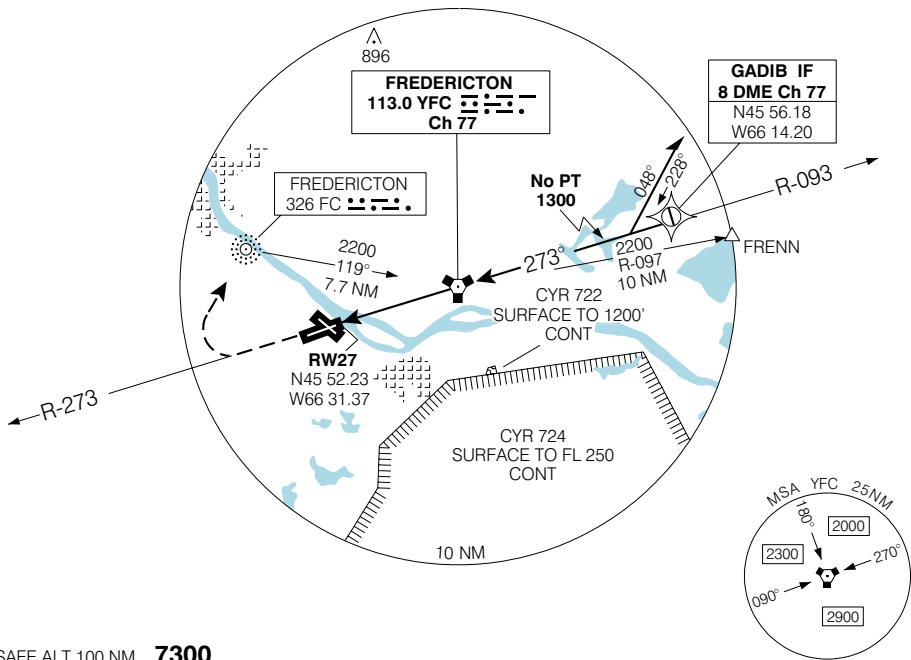
**VOR RWY 27 (GNSS)**

FREDERICTON  
FREDERICTON NB

<b>ARR/DEP</b> <b>MONCTON CENTRE</b> <b>124.3 270.8</b>	<b>RADIO</b> <b>119.0 (MF 5 NM)</b> <b>236.6</b>	<b>ELEV 68</b>
		<b>TDZE 27 66</b>

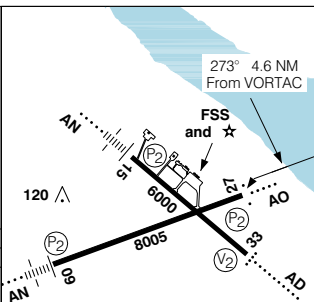
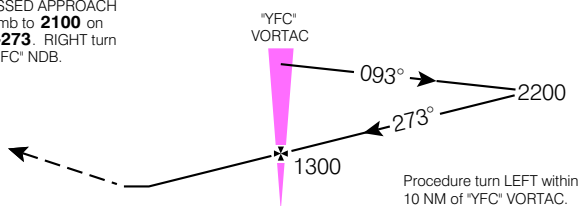
Remain clear of Restricted Area CYR 724.

CYFC



SAFE ALT 100 NM **7300**

MISSED APPROACH  
Climb to **2100** on **R-273**. RIGHT turn to 'FC' NDB.



CATEGORY	A	B	C	D
VOR	<b>400</b>	(334)		1
CIRCLING	<b>580</b>	(512) 1 ½	<b>580</b>	<b>680</b>
			(512) 2	(612) 2

VORTAC to MAP 4.6 NM					
Knots	70	90	110	130	150
Min:Sec	<b>3:56</b>	<b>3:04</b>	<b>2:30</b>	<b>2:07</b>	<b>1:50</b>

**VOR RWY 27 (GNSS)**

N45 52 08 W66 32 14 VAR 19° W

EFF 13 APR 06

CHANGE: GPS to GNSS

FREDERICTON NB  
FREDERICTON  
NAD83