

SID(VECTOR)

**JEMSEG ONE** (RWY 15 EASTBOUND) DEP (JEMSEG 1.)

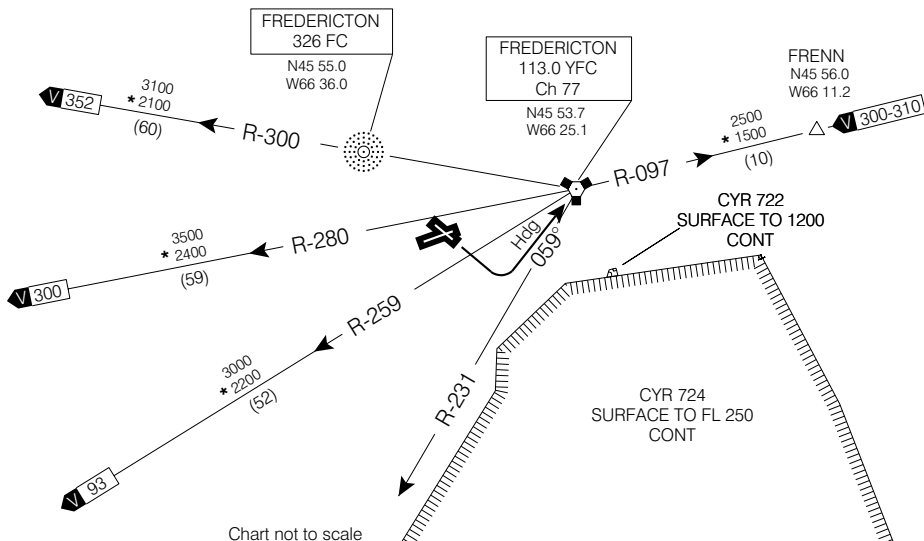
FREDERICTON  
FREDERICTON NB

**RADIO 119.0 (MF 5 NM)**  
**DEP MONCTON CENTRE**  
**124.3 270.8**

**CLIMB TO AND MAINTAIN 5000' ASL**

**CAUTION: CAMP GAGETOWN (CYR 724)**  
**3.8 NM FROM DEPARTURE END OF RWY 15**

Danger: Live firing within CYR 724.



**DEPARTURE ROUTE DESCRIPTION**

Unless otherwise assigned by ATC:

**Rwy 15:** Climbing LEFT turn to hdg 059° as soon as practicable for vectors. Climb to and maintain 5000 ASL.

**NOTE: CYR 724 3.8 NM FROM DEPARTURE END OF RUNWAY 15. REMAIN CLEAR OF CYR CYR 724. FLIGHT BEYOND "YFC" VORTAC R-231 PROHIBITED.**

COMMUNICATION FAILURE - TRANSPONDER MODE A/3 CODE 7600

On recognition of communication failure 10 minutes or less after take-off and in IFR weather conditions proceed as follows:

1. Upon reaching assigned altitude proceed directly on course;
2. Maintain last assigned altitude for 10 minutes after take-off; then
3. Climb to flight planned altitude.

Note: If communication failure occurs more than 10 minutes after take-off, comply with the appropriate procedure for communication failure enroute.

**JEMSEG ONE** (RWY 15 EASTBOUND) DEP (JEMSEG 1.)

FREDERICTON NB  
FREDERICTON

EFF 13 apr 06

CHANGE: CYR added

NAD83