

ILS/DME or LOC RWY 09

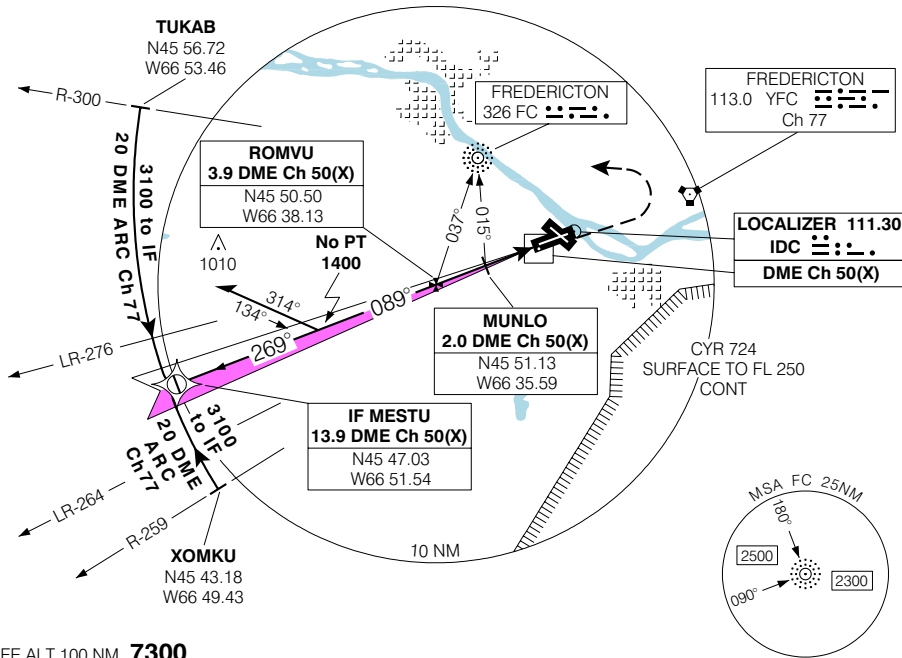
FREDERICTON  
FREDERICTON NB

<b>ARR/DEP</b> <b>MONCTON CENTRE</b> <b>124.3 270.8</b>	<b>RADIO</b> <b>119.0 (MF 5 NM)</b> <b>236.6</b>	<b>ELEV 68</b>
		<b>TDZE 09 67</b>

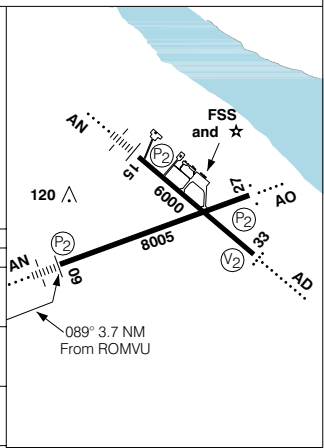
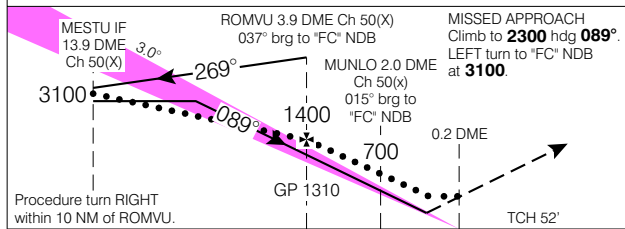
Remain clear of Restricted Area CYR 724.

3100 from FC to ROMVU 217° 4.8 NM.

CYFC



SAFE ALT 100 NM **7300**



CATEGORY	A	B	C	D
ILS/DME	<b>317</b>	(250)	¾ RVR 40	
LOC/DME LOC/NDB	<b>480</b>	(413)	1 RVR 50	
CIRCLING	<b>580</b>	(512) 1 ½	<b>580</b>	<b>680</b>
			(512) 2	(612) 2

ROMVU to MAP 3.7 NM					
Knots	70	90	110	130	150
Min:Sec	<b>3:11</b>	<b>2:29</b>	<b>2:02</b>	<b>1:43</b>	<b>1:29</b>

ILS/DME or LOC RWY 09

N45 52 08 W66 32 14 VAR 19°W

FREDERICTON NB  
FREDERICTON

EFF 13 APR 06

CHANGE: Editorial

NAD83

© 2006 Her Majesty The Queen in Right of Canada, Department of Natural Resources. All rights reserved

Source of Canadian Civil Aeronautical Data: © 2006 NAV CANADA. All rights reserved