

SID(VECTOR)

HARVEY ONE (RWY 15 WESTBOUND) DEP (HARVEY 1.)

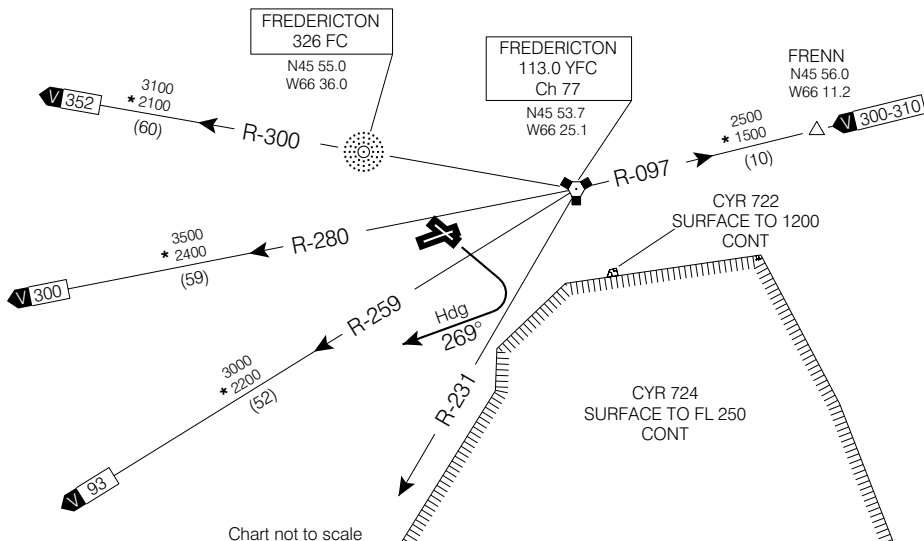
FREDERICTON
FREDERICTON NB

**RADIO 119.0 (MF 5 NM)
DEP MONCTON CENTRE
124.3 270.8**

**CLIMB TO AND
MAINTAIN 5000' ASL**

**CAUTION: CAMP GAGETOWN (CYR 724)
3.8 NM FROM DEPARTURE END OF
RWY 15**

Danger: Live firing within CYR 724.



DEPARTURE ROUTE DESCRIPTION

Unless otherwise assigned by ATC:

Rwy 15: Climbing right turn to hdg 269° as soon as practicable for vectors. Climb to and maintain 5000 ASL.

NOTE: CYR 724 3.8 NM FROM DEPARTURE END OF RUNWAY 15. REMAIN CLEAR OF CYR 724. FLIGHT BEYOND "YFC" VORTAC R-231 PROHIBITED.

COMMUNICATION FAILURE - TRANSPONDER MODE A/3 CODE 7600

On recognition of communication failure 10 minutes or less after take-off and in IFR weather conditions proceed as follows:

1. Upon reaching assigned altitude proceed directly on course;
2. Maintain last assigned altitude for 10 minutes after take-off; then
3. Climb to flight planned altitude.

Note: If communication failure occurs more than 10 minutes after take-off, comply with the appropriate procedure for communication failure enroute.

HARVEY ONE (RWY 15 WESTBOUND) DEP (HARVEY 1.)

FREDERICTON NB
FREDERICTON

EFF 13 APR 06

CHANGE: CYR added

NAD83

© 2006 Her Majesty The Queen in Right of Canada, Department of Natural Resources. All rights reserved

Source of Canadian Civil Aeronautical Data: © 2006 NAV CANADA. All rights reserved