

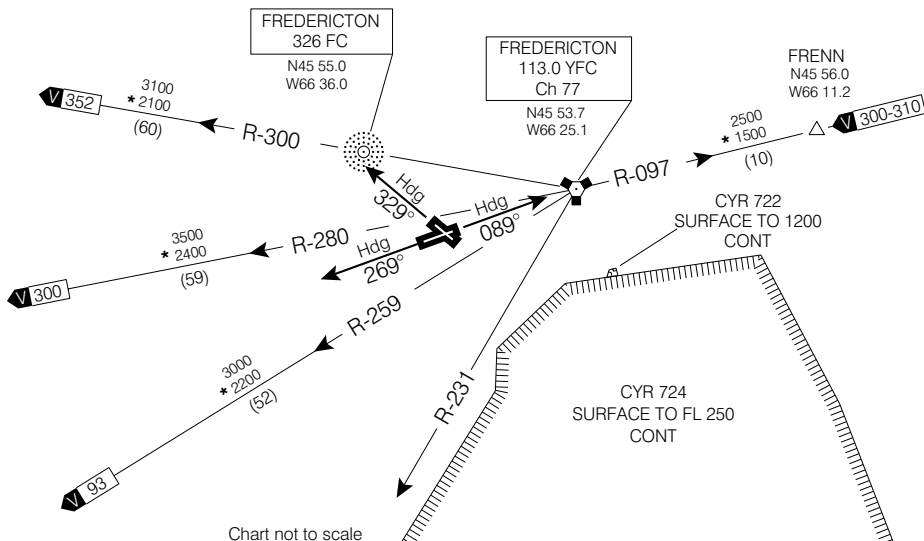
SID(VECTOR)

FREDERICTON SEVEN DEP (CYFC 7.)

FREDERICTON
FREDERICTON NB

RADIO 119.0 (MF 5 NM)
DEP MONCTON CENTRE
124.3 270.8

CLIMB TO AND MAINTAIN 5000' ASL



DEPARTURE ROUTE DESCRIPTION

Unless otherwise assigned by ATC:

- Rwys 09, 27 & 33:**
1. Climb rwy hdg for vectors.
 2. Maintain 5000 ASL.

NOTE: Remain clear of CYR 724. Flight **BEYOND "YFC" VORTAC R-231 PROHIBITED.**

COMMUNICATION FAILURE - TRANSPONDER MODE A/3 CODE 7600

On recognition of communication failure 10 minutes or less after take-off and in IFR weather conditions proceed as follows:

1. Upon reaching assigned altitude proceed directly on course;
2. Maintain last assigned altitude for 10 minutes after take-off; then
3. Climb to flight planned altitude.

Note: If communication failure occurs more than 10 minutes after take-off, comply with the appropriate procedure for communication failure enroute.

FREDERICTON SEVEN DEP (CYFC 7.)

FREDERICTON NB
FREDERICTON