

STAR

WYLDE FOUR ARR (WYLDE. WYLDE 4)

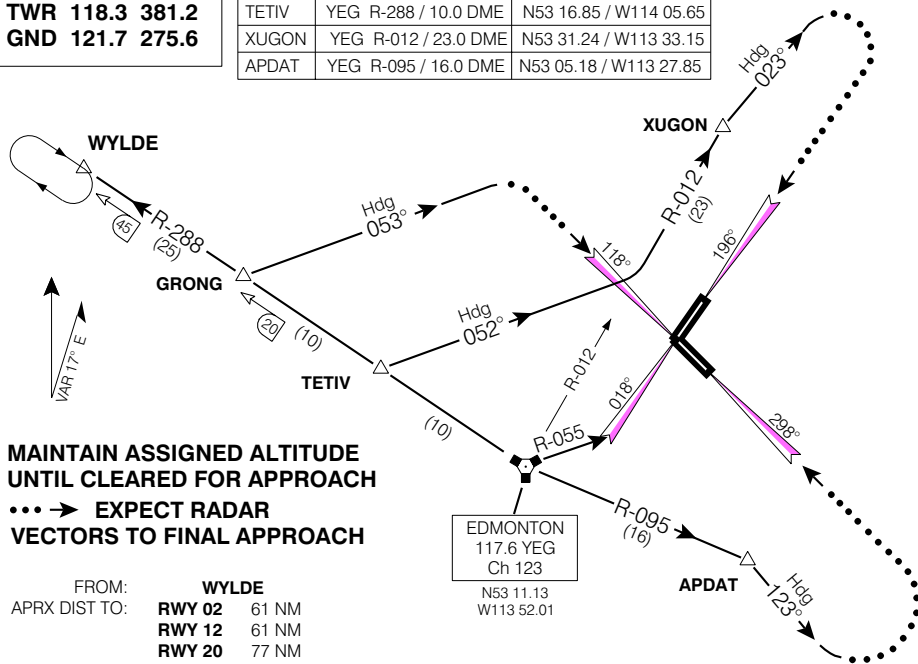


Geomatics Canada

EDMONTON INTL
EDMONTON ALBERTA

ATIS 128.0
ARR 120.5 363.8
TWR 118.3 381.2
GND 121.7 275.6

WYLDE	YEG R-288 / 45.0 DME	N53 36.87 / W114 53.64
GRONG	YEG R-288 / 20.0 DME	N53 22.55 / W114 19.35
TETIV	YEG R-288 / 10.0 DME	N53 16.85 / W114 05.65
XUGON	YEG R-012 / 23.0 DME	N53 31.24 / W113 33.15
APDAT	YEG R-095 / 16.0 DME	N53 05.18 / W113 27.85



**MAINTAIN ASSIGNED ALTITUDE
UNTIL CLEARED FOR APPROACH**
**... → EXPECT RADAR
VECTORS TO FINAL APPROACH**

FROM:	WYLDE	
APRX DIST TO:	RWY 02	61 NM
	RWY 12	61 NM
	RWY 20	77 NM
	RWY 30	77 NM

Chart not to scale

RWY 02:

... From **WYLDE INTXN** via **YEG R-288 INBOUND** to **YEG VORTAC** then via **YEG R-055 OUTBOUND** to intercept Runway 02 Localizer.
Do **NOT** expect lower than **8000'** until **TETIV INTXN**.

RWY 12:

... From **WYLDE INTXN** via **YEG R-288 INBOUND** to **GRONG INTXN** then via **Hdg 053°**.
Expect **RADAR VECTORS** to final approach course.
Do **NOT** expect lower than **8000'** until **GRONG INTXN**.

RWY 20:

... From **WYLDE INTXN** via **YEG R-288 INBOUND** to **TETIV INTXN** then via **Hdg 052°**
to intercept the **YEG R-012** to **XUGON INTXN** then **Hdg 023°**.
Expect **RADAR VECTORS** to final approach course.
Do **NOT** expect lower than **8000'** established on the **YEG R-012**.

RWY 30:

... From **WYLDE INTXN** via **YEG R-288 INBOUND** to **YEG VORTAC** then via **YEG R-095 OUTBOUND** to **APDAT INTXN**, then **Hdg 123°**.
Expect **RADAR VECTORS** to final approach course.
Do **NOT** expect lower than **8000'** until **EAST** of **YEG VORTAC**.

WYLDE FOUR ARR (WYLDE. WYLDE 4)

EFF 5 AUG 04

CHANGE: LOC hdgs

EDMONTON ALBERTA
EDMONTON INTL

NAD83